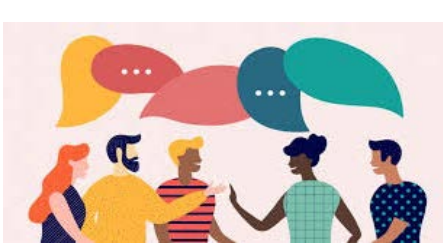




Consultation and Engagement Annual Report

1 April 2022 to 31 March 2023





April	May	June	July	August	September	October	November	December	January	February	March	Equalities data
-------	-----	------	------	--------	-----------	---------	----------	----------	---------	----------	-------	-----------------

Introduction

This report provides an overview of all the projects that the Consultation and Community Engagement team delivered between 1 April 2022 and 31 March 2023. It also includes a brief summary of the results obtained and how the councils have used these to support decision making or shape programmes and action plans.

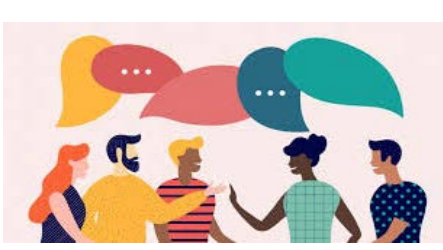
Over the last financial year we have launched, or helped develop, **22** consultations, **21** application/feedback forms, **4** neighbourhood plan reviews (two of which were still open while we were preparing this report so aren't included), and **5** conservation area appraisals. We assist the Conservation team with the preparation of conservation area reviews, and support the Neighbourhood Planning team with the launch of Neighbourhood Plan consultations.

We work hard to engage with all demographic groups in our communities, especially those that we've historically failed to reach, like young people and seldom heard groups to try and ensure that the responses we get are representative of the whole population.

As part of this work, we are establishing an Equality and Diversity database, which will allow us to share our consultations with local groups, charities and organisations that relate to the following protected characteristics: age; gender reassignment; being married, in a civil partnership, pregnant or on maternity leave; disability; race including colour, ethnic or national origin; religion or belief; sex; and sexual orientation.

During the year covered by this report, we began routinely monitoring how representative our consultations are against the demographic in South and Vale. This information is helping us identify where there are gaps and develop a strategy to encourage participation from all demographic groups in our communities. You can find the data we have collected so far on this at the end of this report.

- Information in this report is organised in 13 sections, one for each month the year plus one other
- You can skip between sections by clicking on the tabs at the top of each page



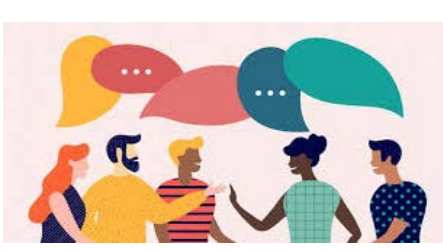
April	May	June	July	August	September	October	November	December	January	February	March	Equalities data
-------	-----	------	------	--------	-----------	---------	----------	----------	---------	----------	-------	-----------------

❖ Some highlights

	In 2022/23 we ran 22 consultations: 12 in Vale, 4 in South and 6 joint ones		In addition to consultations, we produced 21 feedback and application forms		We launched 5 conservation area appraisals: 3 in Vale and 2 in South		We launched 4 neighbourhood plans - all of them were in South
--	---	--	--	--	---	--	--

On average over all consultations, 48% of respondents identified as male, 46% as female, 1% had another gender identity and 5% preferred not to say		Those over 45 y/o made up 66% of all respondents. Under 45 y/o represented 25%		70% of respondents identified as White British and 7% as White-other. Minority ethnic groups made up 11% of the total		77% of respondents said they are not affected by disability or long term illness. 9% were affected and 13% preferred not to say	
---	--	--	--	--	--	--	--

25%	This is the average response rate to all consultations in 2022/23 (compared to the numbers we invited)	355	Attendance of the Central Abingdon Regeneration Framework event in June 2022	234	This is the number of people who helped us shape our Diversity and Inclusion Strategy
------------	--	------------	---	------------	--



April	May	June	July	August	September	October	November	December	January	February	March	Equalities data
-------	-----	------	------	--------	-----------	---------	----------	----------	---------	----------	-------	-----------------

Key consultation projects in 2022/23

❖ Joint Local Plan: Issues Consultation (South & Vale)

314 Responses received. Of them, 38% were agents, developers and landowners, and 31% were individual members of the public.

85% Of respondents agreed with the overall vision for the Joint Local Plan.



The feedback obtained is helping to shape the draft Joint Local Plan for South Oxfordshire and the Vale of White Horse. A consultation document that will set out the proposed policies and sites for development is expected to be published in the Autumn/Winter of 2023.



❖ Your views on the Draft Diversity and Inclusion Strategy (South & Vale)

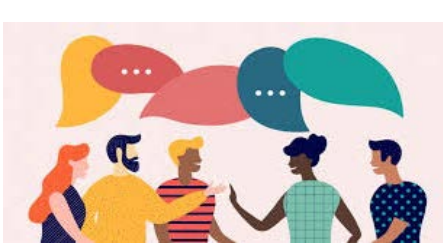
234 Responses received.

63% The average proportion of respondents who agreed with our approach towards the topics in our action plan, including involving our communities; responsive services and customer care; and having a skilled and committed workforce.



As a result of this consultation we have appointed some Equality and Diversity Champions, who will work as ambassadors within the councils to promote equality actions across teams and service areas.





April	May	June	July	August	September	October	November	December	January	February	March	Equalities data
-------	-----	------	------	--------	-----------	---------	----------	----------	---------	----------	-------	-----------------

❖ Review of the Great Coxwell Conservation Area Appraisal Document – Vale of White Horse



We asked: We worked with the Conservation team to gather residents' views on the proposed changes to the conservation area appraisal document, which includes a review of the boundary in the burial area and field south of St Giles Church, and along the south side of the Cherry Orchard and west side of Dark Lane.



Your views: **81%** of respondents agreed with the proposal to change the burial area and field south of St Giles Church, and **82%** agreed with the proposed changes to the area along the south side of Cherry Orchard and west side of Dark Lane. The comments received were generally supportive of the appraisal document saying that it helps manage change and protects the natural environment. The Conservation Team have responded to all comments received.



Actions: The boundary revisions were adopted by the Vale of White Horse District Council on Friday 30 September 2022 and the new designated conservation area is effective from this date. Here is the [Cabinet report](#) which summarises the changes to the draft appraisal.



❖ Crashing – South and Vale



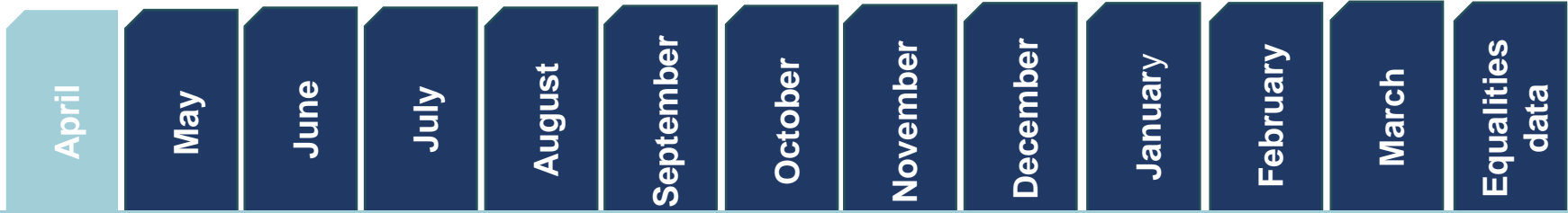
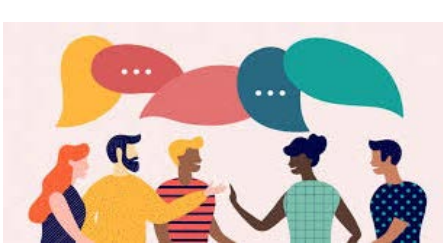
We asked: Crashing was a theatrical production, a live performance commissioned by the Community Safety team and delivered to Year 9 and 10 students at St Birinus school in Didcot, an all boys school. The show shed light on the issue of child sexual exploitation and the devastating impact it can have on a young person's life. A post-show talk focused on decision making, online safety, spotting the signs, and reporting concerns. The questionnaire asked viewers a few questions to understand how much they had learnt during the show.



Your views: The feedback shows that the production was successful at educating young people about child sexual exploitation (CSE), and how they can make decisions to keep themselves safe. **81%** of respondents said they think they would be able to recognise the signs of CSE. Most respondents said they feel safe during the day and night most of the time. **75%** of students selected the right answer to the multiple-choice questions which tested their knowledge of CSE covered in Crashing, showing a sound understanding of the subject.



Actions: The Community Safety team has been in communication with other secondary schools in the districts, the majority of which have indicated they would like to show CRASHING in the late summer term 2023. When delivering future performances the team will invite youth services to attend.



In April 2022 we also launched the **Local Placemaking Plan Application Form for South and Vale**

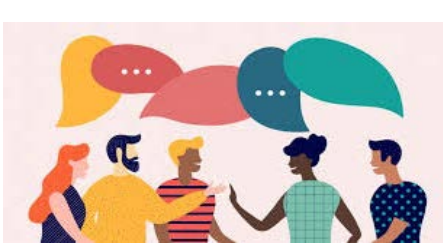
Following a successful joint bid for government grant funding from the Department for Levelling Up, Housing and Communities (DLUHC), our councils were invited to take part in a [national pilot for a new, simpler approach to neighbourhood planning](#).

This pilot project involved working in conjunction with DLUHC and was aimed at trialling new ideas to simplify the approach to neighbourhood planning.



While many communities have already benefitted from developing their own Neighbourhood Plans, some smaller community groups can be hesitant about the amount of time, effort, and resources the process can take, so we invited community groups across the districts to apply to take part in the pilot.

Thanks to our successful application process, the councils are working with Great Haseley, Moulsoford and Stoke Row Parish Councils from South Oxfordshire, and West Challow, Kennington, Fyfield and Tubney Parish Councils from Vale of White Horse as part of the pilot.



April	May	June	July	August	September	October	November	December	January	February	March	Equalities data
-------	-----	------	------	--------	-----------	---------	----------	----------	---------	----------	-------	-----------------

❖ Joint Local Plan: Issues Consultation – South and Vale



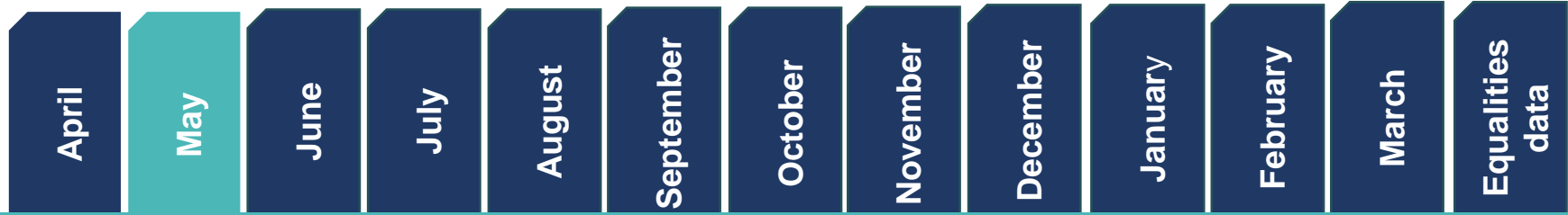
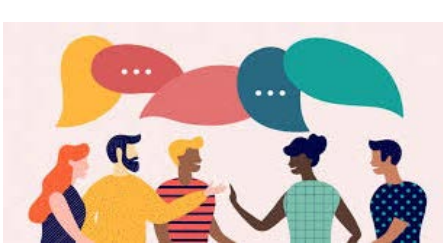
We asked: In this first stage of the South and Vale Local Plan we asked stakeholders what are the main issues facing our districts and how we might be able to use our planning powers to address them.



Your views:

- The areas that respondents mentioned the most when asked *what they value* about where they live were: **countryside** (96 times), **access** (79 times), **community** (50 times), **green spaces** (44 times) and **transport links** (15 times). Conversely, when asked *what things they would change*, the striking message that emerged was the need for improved infrastructure, services and amenities. In addition, respondents raised concerns about traffic and speed limits, said more focus should be put on protecting the natural environment and wildlife, and housing development should be reduced or halted, although more affordable housing is needed.
- **Issues:** almost **85%** of respondents agreed that the issues identified in the consultation are the main issues the districts are facing. These are: climate; protecting our countryside; our towns and villages; quality of life and affordability; traffic and transport; employment; development and infrastructure. Among them, the issue that respondents considered the most important was protecting our countryside (selected by **31%** of respondents), followed by climate (**25%**), and development and infrastructure (**16%**).
- **Vision:** around **85%** of respondents agreed with the vision for the Joint Local Plan. When asked whether there was something specific about the vision which they disagreed with, most comments indicated that the vision was too vague and generic, and progress was hard to measure.
- **Reducing Carbon Emissions:** respondents said that the most important thing the districts could do on this subject was implementing “highest standards of energy efficiency in new buildings”, whilst “limit parking at new developments” received the highest level of disagreement.
- **Nature Recovery and Landscape:** the most popular action for this theme was “respect landscape character, dark skies and the natural beauty of the countryside in development decisions”. The highest level of disagreement was recorded for “minimise the use of greenfield land by increasing the density of developments”.





❖ Joint Local Plan: Issues Consultation – South and Vale

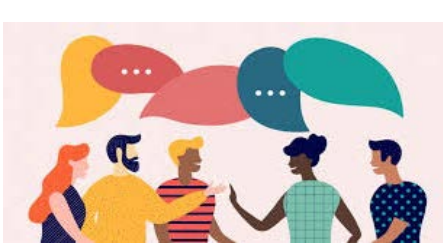


Your views continued...

- **Protecting and Enhancing Local Heritage:** respondents selected two opportunities as the most important in this area, “protect heritage assets from harm or loss” and “plan development at a scale appropriate to towns and villages”. There wasn’t much disagreement with any of the other opportunities on this theme.
- **Thriving and Inclusive Communities:** the most important action selected by respondents with regards to this theme was “plan for housing that is genuinely affordable for our communities”. Conversely, disagreement was registered with respect to “support affordable housing on sites we would normally protect from development”.
- **Transport and Facilities:** respondents would like to see the councils “plan for sustainable travel that is reliable, integrated and accessible”, whilst the least popular option was “plan for new technological innovation in transport and communications technology”. No high level of disagreement was recorded in this section. When asked about what would encourage them to drive less, respondents mentioned “better infrastructure for cycling”.
- **Healthy Lifestyles and Safe Communities:** the most important opportunities in this areas were “avoid inappropriate developments in flood risk areas” and “plan places for people to grow their own food”. Very low levels of disagreement were registered for all the other options.
- **Jobs and Opportunities for Innovation:** the top three opportunities that respondents considered the most important here were “plan jobs near homes and homes near jobs”, “support working from home and community-based work hubs/facilities”, and finally “support rural land-based businesses, the local food economy and rural tourism”.



Actions: We have reviewed all the feedback received and summarised it in a [consultation statement](#). The results of the Issues consultation will inform the content of the next stage in the engagement process, which will be the Joint Local Plan - Options consultation.



Below are two other engagement projects we launched in May 2022:

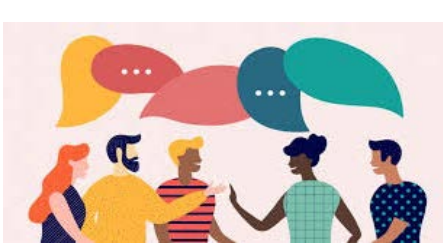
❖ **The Joint Local Plan 2041: Call for Land and Buildings Available for Change Form**

The 'Call for Land and Buildings Available for Change' is an invitation to landowners, agents, developers, community groups and others who are interested in having land considered for a range of different uses - housing and jobs, community and environmental uses, such as public open spaces or renewable energy - to submit information to the councils on the sites they would like to be assessed as part of the Joint Local Plan.

❖ **South and Vale Building Control – your feedback**

This is a feedback form to gather users' views around the service provided by our Building Control service, currently branded as Southvale. The evidence obtained will help us meet our high standards and help us understand what can be improved. The feedback will also be used as part of the work we do every year on maintaining our ISO Accreditation, which is a formal award that shows we are meeting international standards for the service we provide.





April	May	June	July	August	September	October	November	December	January	February	March	Equalities data
-------	-----	------	------	--------	-----------	---------	----------	----------	---------	----------	-------	-----------------

❖ Proposed Taxi Tariff for Vale of White Horse: Have your say



We asked: In March 2021 we had asked drivers and proprietors for their views on some proposed changes to our Joint Taxi Licensing Policy. This process was driven by the need to ease the effects of the cost of living crisis on drivers. As part of that process, we received some requests to review the tariff to ensure it was set at an appropriate level. In June 2022 we then asked drivers, proprietors and residents what they thought of the latest proposal for taxi tariff.



Your views: 63% of drivers and proprietors disagreed with the proposed changes to the tariff. Looking at each individual proposed changes, the highest level of disagreement was expressed with regards to the proposal of a minimum charge for each tariff (68% strongly disagreed), and a charge per additional passenger when carrying 5+ passengers (68% strongly disagreed). However, high levels of disagreement were registered towards all proposed changes: proposed tariff times, days and dates; subsequent distance charge and waiting time charge.



Actions: The results of this survey were presented and reviewed by Cabinet members on 30 September 2022. After carefully assessing the responses received against their financial impact on taxi drivers in the context of a cost of living crisis, members agreed to set a new tariff that balanced drivers' needs with the cost to the public. The [new tariff](#) took effect from 1 October 2022.



❖ Proposed Taxi Tariff for South Oxfordshire: Have your say



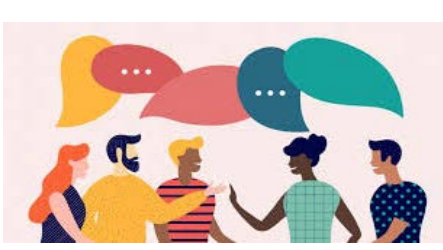
We asked: In March 2021 we had asked drivers and proprietors for their views on some proposed changes to our Joint Taxi Licensing Policy. As for the Vale, this process was driven by the necessity to ease the effects of the cost of living crisis on drivers. Following the feedback received, we adopted the proposed policy, which included setting a maximum taxi tariff for the district. In June 2022 we then asked drivers and proprietors what they thought of the proposed tariff.



Your views: The vast majority of respondents (drivers and proprietors) disagreed with the proposed changes to the tariff (89%). With respect to individual proposals, the highest level of disagreement was expressed towards a minimum charge for each tariff (78% strongly disagreed), and a charge per additional passenger when carrying 5+ passengers (75% strongly disagreed). However, as for the Vale, high levels of disagreement were registered towards all other proposed changes: proposed tariff times, days and dates; subsequent distance charge and waiting time charge.



Actions: The results were presented and reviewed by Cabinet members on 29 September 2022. After carefully assessing the responses received against their financial impact on taxi drivers in the context of a cost of living crisis, members agreed to set a new tariff that balanced drivers' needs with the cost to the public. The new tariff took effect from 1 October 2022. You can find out more information on the [taxi fares webpage](#).



April	May	June	July	August	September	October	November	December	January	February	March	Equalities data
-------	-----	------	------	--------	-----------	---------	----------	----------	---------	----------	-------	-----------------

❖ Central Abingdon Regeneration Framework (CARF) – Vale of White Horse



We asked: We collaborated with Carter Jonas to engage with community groups, local businesses and the wider public to help identify challenges and areas for improvement in Abingdon. The engagement activity was part of the regeneration project for central Abingdon, which aimed at identifying options for improving buildings, spaces and movement around the town. We ran a four week online consultation between 17 June and 15 July 2022. We also held an in-person event on 17-18 June which was attended by **355** people, and a student workshop on 11 July which was attended by **20** people.



Your views: **383** people responded to this consultation. Overall, respondents agreed with and supported the CARF project. More specifically, **61%** of respondents supported or strongly supported its vision and objectives. They suggested that central Abingdon could be improved by a number of interventions, including: providing a better retail, food and beverage offer; addressing traffic volume and control; improving parking and accessibility.



Actions: We are now reviewing the findings and using them to inform our updated proposals for the CARF. For more information on the results and how we are responding to the key points raised, please read the [engagement report](#).

❖ Grove and East Challow Community Governance Review – Vale of White Horse



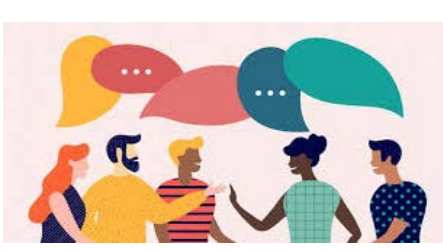
We asked: residents of the two parishes to comment on the proposal to remove the warding arrangements for the parish of Grove, so that the two Grove wards could be combined into one with 16 seats; and to make no change to the boundary between Grove Parish and East Challow Parish. Respondents were given the opportunity to comment on one proposal only, or both of them.




Your views: **8** completed responses were received for this consultation. All respondents supported the proposal to remove the warding arrangements for the parish of Grove, so that the two Grove wards could be combined into one with 16 seats. The majority of respondents (5 out of 8) also supported the second proposal to make no change to the boundary between Grove Parish and East Challow Parish.





Actions: On 6 December 2022, the Community Governance and Electoral Issues Committee agreed to make no change to the parish boundary between Grove and East Challow. The arrangements in place provided for a well-defined boundary. The proposed change did not impact on any properties and therefore did not impact on community identity.




❖ North Hinksey Community Governance Review – Vale of White Horse


 **We asked:** stakeholders to comment on the proposal to include “Botley” within the name of the parish (i.e. “Botley and North Hinksey Parish Council”), and change the name from “Parish Council” to “Community Council”.


 **Your views:** We received 20 completed responses to this consultation. The vast majority of them strongly supported the proposal to include “Botley” within the name of the parish (**80%**), and a further **15%** said that they tend to support it. The outcome of the proposal to change the name of the council from “Parish Council” to “Community Council” is not as clear. More specifically, while **50%** of respondents supported this change, **45%** strongly opposed it and **5%** neither supported it nor opposed it.

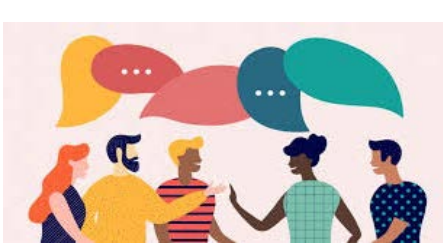
 **Actions:** On 19 October 2022, the Community Governance and Electoral Issues Committee agreed to adopt council officers’ recommendation to change the name of the parish to include Botley in order to better reflect the geography and community it covers. The parish has therefore been renamed “Botley and North Hinksey parish”.

❖ Kingston Bagpuize Community Governance Review – Vale of White Horse

 **We asked:** residents to comment on the proposal to make no change to the boundary between Kingston Bagpuize with Southmoor and Fyfield and Tubney Parish.




 **Your views:** We received 35 completed responses. **60%** of respondents supported the proposal to make no change to the boundary between Kingston Bagpuize with Southmoor Parish and Fyfield and Tubney Parish. Most of them expressed concern that a change of boundary might lead to housing development in the area, which respondents said would put further pressure on the already inadequate local infrastructure and services (**65%**). Conversely, 8 respondents (**23%**) strongly opposed the proposal, which they said could determine a lack of oversight from Kingston Bagpuize Parish Council on housing development projects which would put further pressure on the local infrastructure but fail to generate any council tax revenues.

 **Actions:** On 19 October 2022, the Community Governance and Electoral Issues Committee agreed to make no change to the current boundary between Kingston Bagpuize with Southmoor and Fyfield and Tubney parishes.






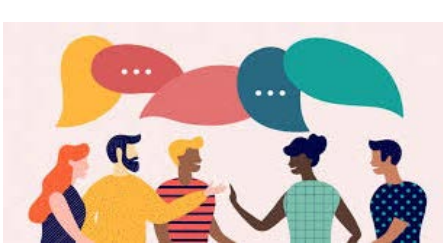
April	May	June	July	August	September	October	November	December	January	February	March	Equalities data
-------	-----	------	------	--------	-----------	---------	----------	----------	---------	----------	-------	-----------------

❖ Sunningwell, Wootton and Cumnor Community Governance Review – Vale of White Horse

-  **We asked:** stakeholders for their views on the proposal to make no change to the boundary between Sunningwell Parish and Wootton and Cumnor Parishes, and on the proposal to amend the name of Wootton Parish to include Boars Hill.
-  **Your views:** We received **243** completed responses. With respect to the proposal to make no change to the boundary between Sunningwell, Wootton and Cumnor Parishes, respondents were equally split between those in support (**50%**) and those who opposed it (**50%**). Conversely, the majority of respondents strongly opposed the proposal to amend the name of Wootton Parish to include the name Boars Hill (**62%**).
-  **Actions:** On 19 October 2022, the Community Governance and Electoral Issues Committee agreed to make no change to the current boundaries between Cumnor, Sunningwell and Wootton Parishes.

❖ South Hinksey Community Governance Review – Vale of White Horse

-  **We asked:** consultees to comment on the proposal to make no change to the parish boundary between South Hinksey and Kennington. This followed from the request received from South Hinksey Parish Council that the area shown in blue on the [map](#) is moved from Kennington Parish to South Hinksey Parish in order to incorporate the Westwood Hotel site into the parish.
-  **Your views:** We received 5 completed responses for this engagement. All respondents agreed with the proposal to make no change to the boundary between South Hinksey and Kennington Parishes (**100%**). Among the additional comments received from respondents, almost all of them expressed support for this proposal while 1 disagreed with it and argued that a change of boundary is needed.
-  **Actions:** On 19 October 2022, the Community Governance and Electoral Issues Committee decided to make no change to the parish boundary between South Hinksey and Kennington.



April	May	June	July	August	September	October	November	December	January	February	March	Equalities data
-------	-----	------	------	--------	-----------	---------	----------	----------	---------	----------	-------	-----------------

❖ Didcot Community Governance Review – South Oxfordshire



We asked: stakeholders to comment on the proposal to amend the number of ward councillors selected on Didcot Town Council to better reflect the number of electors they represent, while maintaining the same overall number of councillors.



Your views: Half of respondents opposed this proposal, including **46%** who strongly opposed it. Respondents provided the following reasons for this: **28%** said the reduction in the number of councillors was in contrast with the increase in the town's population; **22%** said that the proposed change could cause an unfair electoral representation; another **22%** said that the size of wards should be smaller and every ward should elect the same number of councillors. Conversely, **46** per cent of respondents supported the above proposal, including 12 per cent who strongly supported it.



Actions: With only two members of the Electoral Governance Committee entitled to vote on this item, and with no agreement on a proposal, on 10 October 2022 the committee agreed to defer this item to a future meeting.

❖ Thame Community Governance Review – South Oxfordshire



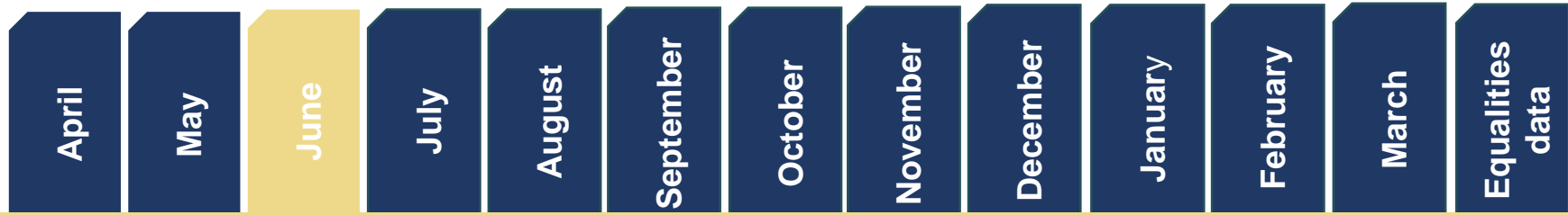
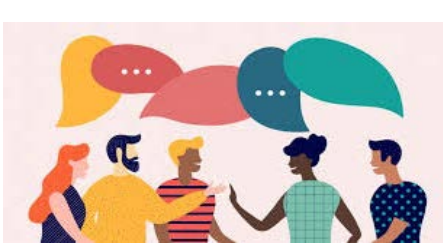
We asked: consultees to comment on two proposals. The first proposal was to make no change to the boundary between Thame Parish and Great Haseley Parish. The second proposal was to amend the ward boundary between Thame North and Thame South wards to address an imbalance in the electorate resulting from higher levels of residential development in the South ward.



Your views: The majority of respondents opposed the proposal to make no change to the boundary between Thame Parish and Great Haseley Parish (**67%**), and supported the proposal to amend the ward boundary between Thame North and Thame South to ensure a more equal representation (**63%**).



Actions: On 10 October 2022 the Electoral Governance Committee agreed to make no change to the parish boundary between Thame Parish and Great Haseley Parish because such a change would not address issues of the identity and interests of the local community or the effective and convenient representation of local residents. The Committee agreed to amend the town council ward boundaries to provide for a better electoral balance between Thame North and Thame South, in the interest of achieving effective and convenient local government representation and to provide for a more logical division of the Parish.



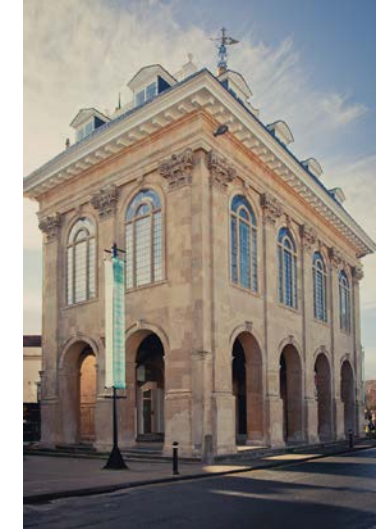
In June 2022 we also launched the two projects below:

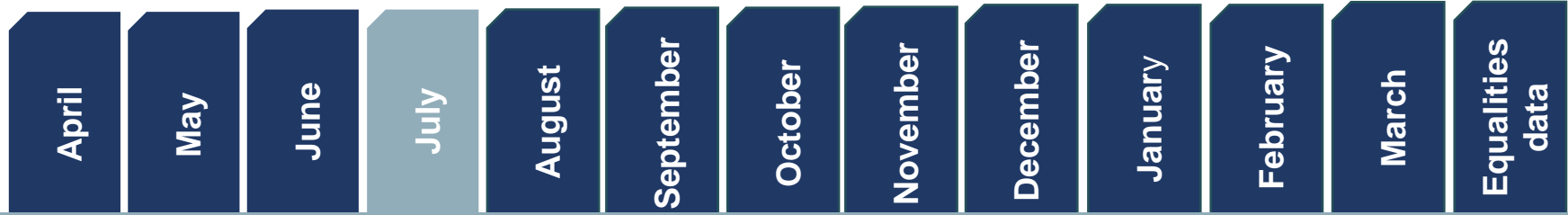
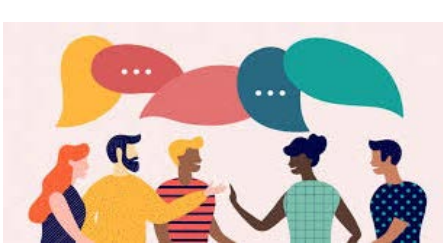
❖ **The Central Abingdon Regeneration Framework (CARF) sign-up form**

This sign-up form was launched shortly before the wider consultation to introduce and raise awareness and interest in the Central Abingdon Regeneration Framework Project. The form offered residents, businesses and community organisations the opportunity to keep in touch and up to date with the CARF project.

❖ **Litter Picking Project Form – South and Vale**

This form helped us understand where volunteers were litter picking, what type and how many litter items they found (i.e. plastic bottles, food waste, cigarette butts), and how many litter bins they saw whilst picking.



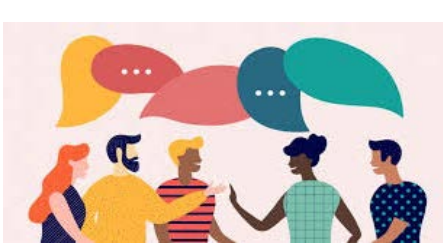


In July 2022 we launched the **Settlement Assessment Questionnaire for Town and Parish Councils** for both South Oxfordshire and the Vale of White Horse.




This consultation was aimed at getting a good understanding of settlements in our districts, and more specifically how well residents' everyday needs are met living in a particular area. We asked Town and Parish Councils detailed questions about the profile of their settlements and the level of services available. This gave us an indication of what might help facilitate thriving and healthy communities.

We'll analyse and summarise the information collected through this survey to produce a settlement hierarchy based on their sustainability. This will be part of the evidence for the Joint Local Plan 2041 and will help inform our planning policy.





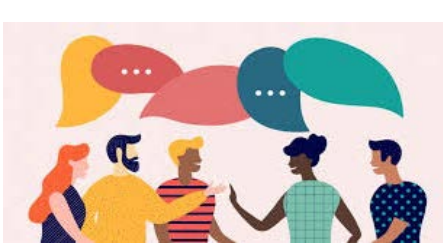


❖ Harwell East Community Governance Review – Vale of White Horse

-  **We asked:** Having previously decided to establish a new parish, we asked residents for their views on five main points. Specifically, we asked what the name of the new parish should be, whether the parish should have a parish council or an alternative style of council (community, neighbourhood or village council); the ordinary year of elections; the council size (number of councillors) and whether the parish should be divided into wards.
-  **Your views:** We received 97 completed responses. The majority of respondents did not support the proposal that the new parish be called “Harwell East Parish” (59%). The majority of respondents supported all other proposals, more specifically: 58% supported the proposal that the style of the new council should be a parish council; 54% agreed that the effective date of the new parish should be 1 April 2023 and that the parish should return eight councillors; finally 58% supported the proposal that the new parish should not be divided into wards.
-  **Actions:** In early December 2022 the Community Governance and Electoral Issues Committee agreed that the new parish, on land previously within Harwell Parish east of the A34, would come into existence in 2023 with elections in May. The new parish will be known as ‘Western Valley’, have an unwarded parish council and eight councillors.

❖ Your views on the Diversity and Inclusion Strategy – South and Vale

-  **We asked:** residents, businesses/organisations, district, town and parish councillors, and council officers to help shape our new Diversity and Inclusion Strategy. The strategy explains how we will do more than just our legal requirements to help people access our services, support and information in the best possible way.
-  **Your views:** We received 234 responses. The majority of respondents agreed with our proposed approach towards these aspects: ‘knowing our communities’ (64% agreed); ‘involving our communities’ (64%); ‘leadership, partnership and organisational commitment’ (54%); ‘responsive services and customer care’ (66%), and a ‘skilled and committed workforce’ (68%). Overall, 44% of respondents considered the Draft Diversity and Inclusion Strategy to be sensible, thorough and inclusive, whilst 29% expressed disappointment and considered it to be unnecessary, a waste of public resources.
-  **Actions:** The Diversity and Inclusion Strategy has been approved by Cabinet and adopted by South Oxfordshire and the Vale of White Horse in Autumn 2022. One of the first actions from the strategy was to appoint some Equality and Diversity Champions, who will work as ambassadors within the councils, to promote and champion equality actions across teams and service areas and help run events.



April	May	June	July	August	September	October	November	December	January	February	March	Equalities data
-------	-----	------	------	--------	-----------	---------	----------	----------	---------	----------	-------	-----------------

In August 2022 we also launched the following projects:

❖ **Summer of skate competition – feedback survey**

This comment form helped obtain feedback from those who participated in one of the ten skate competition events held in Sutton Courtenay, Faringdon, Berinsfield, Henley-on-Thames, Thame and Grove between 3 August and 9 September 2022. In addition, for under 18s with an interest in skateboarding or a willingness to try it, we also obtained feedback from parents and guardians. The events were organised as part of the Police Crime Commissioner’s plan to reduce antisocial behaviour, improve the perception of the police and promote youth services. Respondents to the survey had the chance to win great prizes, including a brand-new skateboard and starter kit.



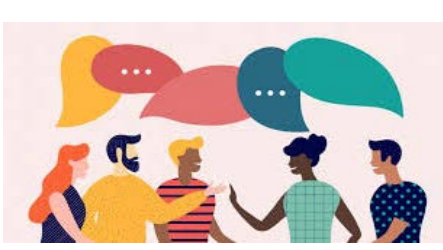
❖ **Litter Bug Detectives Trail: your feedback**

This feedback form asked those who participated to our Litter Bug Detectives Trails around South Oxfordshire and the Vale of White Horse to let us know what worked well and maybe not so well, in order to improve the experience for everyone going forward.

❖ **Didcot Garden Party: your feedback**


Following the Didcot Garden Party in August 2022, we asked participants for their views on the event to help identify what we could do to improve everyone’s experience at future events. The comment form asked those who attended what they enjoyed the most about the party, what activities or workshops they would be interested in participating in the future, and how likely they were to attend the next Didcot Garden Town Party.







April	May	June	July	August	September	October	November	December	January	February	March	Equalities data
-------	-----	------	------	--------	-----------	---------	----------	----------	---------	----------	-------	-----------------


❖ The Beacon: What would you like to see? – Vale of White Horse


 **We asked:** residents what events, live shows or activities they would like to see at The Beacon in Wantage. The consultation also asked hirers and potential hirers of the venue to provide feedback on the facilities and to indicate what type of activities or events they would be interested in using the venue for.

 **Your views:** 55% of respondents said they had visited The Beacon before to attend a class/workshop, whilst 47% did so to drop-off/wait for a child attending a class. The most common reasons for not visiting The Beacon were unawareness of the venue or lack of interest in the offer of shows and classes. The three types of events that most people said they were interested to see at The Beacon were: cinema (86%), theatre performances (84%) and musicals (69%). 77% of respondents said they would like The Beacon to be a local community centre. 65% said they would like to see more live music and performances. The activities that hirers were most interested in using the venue for were social gatherings for children and adults.

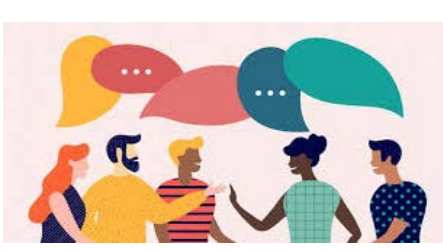
 **Actions:** The results of the consultation have been analysed and summarised in a report and will help us develop the activities and facilities we offer, so we can successfully meet the needs and wants of the community we serve.

❖ South and Vale Validation Checklists Consultation

 **We asked:** In September 2022 we asked agents, developers, landowners and business/organisations for their views on the planning applications' 'Validation Checklists' and 'Validation Guide'. The purpose of this consultation was to seek the views of those who have previously submitted planning applications to South Oxfordshire and/or Vale of White Horse District Councils. The consultation focused on the recently reviewed validation checklists for a number of statutory application types, as well as the newly produced guidance document.

 **Your views:** Most respondents had no strong feelings about the checklists or the guidance document. Some clarification was required regarding the documentation needed and to explain that more information is included in the guidance document. Amendments were required to a number of the checklists as they were asking for unnecessary plans/documents.

 **Actions:** In response to the consultation findings we have made amendments to both the guidance and the validation checklists. Details of the specific changes that have been made in response to the comments can be found in [the final report](#).



❖ Ask for Angela – South and Vale



We asked: Ask for Angela is a campaign that is designed to safeguard women in pubs and clubs who are feeling unsafe or at risk of sexual violence. The scheme encourages people to discreetly ask a member of staff for help by asking for Angela. The consultation helped the Community Safety team carry out a review of the scheme and find out if venues were using it and what councils could do to support them.



Your views: Respondents were almost equally split between those who were using the Ask for Angela scheme (47%), and those who weren't (53%). One of the most common reasons for not using the scheme was not knowing how to promote it. Among the things that councils could do to help promote the scheme, respondents mentioned: communications, providing posters and documentation. Most respondents said they would be happy to use A4 posters and stickers in their venues to promote Ask for Angela, and to require all staff to complete online training.



Actions: This consultation helped us gather the contact details of those who were interested in discussing the scheme further. The results collected were used to send resources and further information to those who requested it, and to estimate the number of venues that were already using the scheme.

❖ Council Tax Reduction Scheme: consultation on proposed changes for 2023/24 – Vale of White Horse



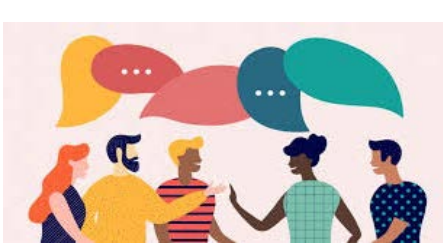
We asked: The Vale of White Horse Council invited residents to express their views on a number of proposed changes to the Council Tax Reduction Scheme which would ensure that everyone contributes to services on a fairer basis. More specifically consultees were asked their view on whether the maximum council tax reduction for eligible claimants be increased from 91.5 to 100 per cent; whether a single person living with another adult on low income should be entitled to up to 25 per cent reduction in council tax; and whether council tax reduction should no longer be capped to B and E.



Your views: We received a total of 76 responses. A majority of respondents agreed with the proposals to remove the provision that recipients of council tax reduction must pay at least 8.5 per cent of council tax (68% agreed), and to allow single adults living with another adult on low income to claim up to 25 per cent council tax reduction (65%). The third proposal to no longer cap council tax reduction to B and E was also supported by the largest group of respondents (43%).



Actions: On the basis of the results obtained, the Revenues and Benefits Team has recommended that the council's scrutiny committee adopt all the above three proposals. Details of the Council Tax Reduction Scheme for 2023 have been published on the [council's website](#).



In October 2022 we launched the following feedback forms to gather the opinion of teachers, students and service users. Two of these feedback forms – the waste and recycling session for students (teachers and students feedback) - have closed but are part of an ongoing project whose results are not yet available.

❖ **The waste and recycling session for students: teachers feedback on general recycling and waste.**

From September 2022 officers in the Waste team have been delivering a series of presentations and workshops to schools around our districts on the topics of: **1. general recycling and waste**; 2. anti littering; 3. reduce and reuse over Christmas; 4. food waste; 5. environmental engineering and bees. After each session we tried to capture feedback from both teachers and students. This comment form asked teachers for their opinions on the presentation, if they thought it was delivered clearly and in an engaging way, whether they had found the workshop activity informative, and if they felt students' knowledge of recycling and waste had improved after the session.

❖ **The waste and recycling session: students feedback on general recycling and waste.**

This feedback form asked students for their opinions on the presentation and workshop delivered by the Waste team on topic **1: general recycling and waste**.


❖ **Cornerstone Peer Review: registration form.**


This form was launched to register residents' interest in attending a focus group on the future of Cornerstone Arts Centre in Didcot. As Cornerstone continues to recover from the impact of the pandemic, the focus group gave us the opportunity to review the future direction of the centre to ensure it continues to meet the arts and cultural needs of the community.







❖ Review of the Safe Place Scheme (Abingdon and Botley) – Vale of White Horse


 **We asked:** The Safe Place Scheme supports our residents to remain safe and independent in the community. Anyone who feels vulnerable or distressed can easily identify a safe place by the recognisable logo, and seek safety and assistance within. This project provided an opportunity for the Community Safety team to review the Safe Place Scheme, including understanding the general level of awareness within businesses and organisations, how likely those who had offered a safe place were to remain in the scheme, how often it had been used and what support councils could provide.


 **Your views:** We received **6** completed responses. All respondents said they were aware that their business/organisation was part of the Safe Place Scheme and they would like to remain in it. 4 respondents said their staff were aware of the scheme, however, 3 of them said that staff had not received training. 5 respondents said they would like more window stickers to help promote the scheme, 3 said they would like to receive more leaflets and free online training. Most respondents said the scheme had never been used in the previous 12 months (5).

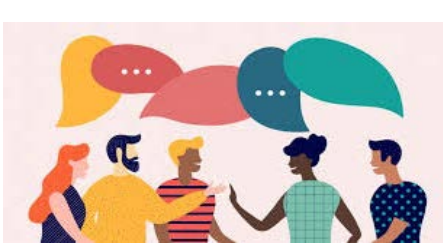
 **Actions:** The review of the Safe Place Scheme in Abingdon and Botley is part of a wider project that aims to assess the level of awareness and the effectiveness of the scheme around South and Vale. The feedback received will be implemented at the end of the project, when all reviews have been completed.

❖ Review of the Safe Place Scheme (Faringdon and Wantage) – Vale of White Horse

 **We asked:** This project provided an opportunity for the Community Safety team to review the Safe Place Scheme, including understanding the general level of awareness within businesses and organisations, how likely those who had offered a safe place were to remain in the scheme, how often it had been used and what support councils could provide.

 **Your views:** We received **14** completed responses. All respondents said they were aware that their business/organisation was part of the Safe Place Scheme and 13 said they would like to remain in it. 9 respondents said their staff were aware of the scheme, but only 2 said that they had received training. 10 respondents said they would like more window stickers to help promote the scheme, 7 said they would like to receive more leaflets and free online training. Most respondents said the scheme had never been used in the previous 12 months (9).

 **Actions:** As for Abingdon and Botley, the review of the Safe Place Scheme in Faringdon and Wantage is part of a wider project that aims to assess the scheme around South and Vale. The feedback received will be implemented at the end of the project, when all reviews have been completed.



In November 2022 we also launched the following feedback forms:

❖ **The waste and recycling session for students: teachers feedback on anti-littering (topic 2)**

From September 2022 officers in the Waste team have been delivering a series of presentations and workshops to schools around our districts on the topics of: 1. general recycling and waste; 2. **anti littering**; 3. reduce and reuse over Christmas; 4. food waste; 5. environmental engineering and bees. After each session we tried to capture feedback from both teachers and students. This comment form asked teachers what they thought of the presentation delivered by officers with respect to topic 2, anti-littering, specifically if they thought it was delivered clearly and in an engaging way, whether they had found the workshop activity informative, and if they felt students' knowledge of recycling and waste was improved.

❖ **The waste and recycling session: students feedback on anti-littering (topic 2)**

This feedback form asked students for their opinions on the presentation and workshop delivered by the Waste team on topic 2: anti-littering.

The above feedback forms have closed but are part of an ongoing project whose results are not yet available.





In December 2022 we launched the following feedback forms to gather the opinion of teachers, students and service users. Two of these surveys are open on an ongoing basis, whilst two have closed but are part of an ongoing project whose results are not yet available.

❖ **The waste and recycling session on reduce and reuse over Christmas (topic 3): teachers feedback.**

From September 2022 officers in the Waste team have been delivering a series of presentations and workshops to schools around our districts on the topics of: 1. general recycling and waste; 2. anti littering; **3. reduce and reuse over Christmas**; 4. food waste; 5. environmental engineering and bees. After each session we tried to capture feedback from both teachers and students. This comment form asked teachers for their opinions on the presentation, if they thought it was delivered clearly and in an engaging way, whether they had found the workshop activity informative, and if they felt students' knowledge had improved after the session.



❖ **The waste and recycling session on reduce and reuse over Christmas (topic 3): students feedback.**

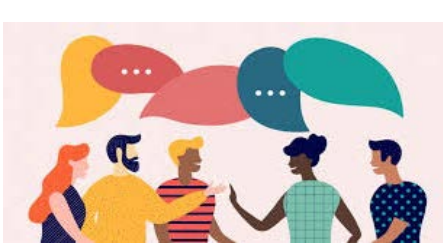
This feedback form asked students for their opinions on the presentation and workshop delivered by the Waste team.

❖ **The bin capacity form (internal use only) - ongoing.**

This form has been created to allow officers to manually log, manage and analyse bin capacity and usage in both districts.




❖ **Cornerstone in Didcot: your feedback - ongoing.**

This feedback form aims to gather feedback from users of the Cornerstone arts centre to review its performance and improve all services. It gives users the opportunity to provide their opinions on the online booking system, website, box office, the facilities and the café/bar.






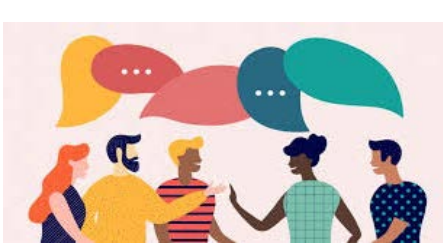
April	May	June	July	August	September	October	November	December	January	February	March	Equalities data
-------	-----	------	------	--------	-----------	---------	----------	----------	---------	----------	-------	-----------------

❖ Safer Youth Didcot – South Oxfordshire

-  **We asked:** For this project we teamed up with [Didcot TRAIN](#), a charity based in Didcot that works with young people, to find out how safe they feel in the Didcot community and online. The aim was to find out if young people have ever felt unsafe walking around the town or experienced any unwanted behaviour. The evidence gathered through the survey will help local organisations look at ways of reducing harassment and violence against young people.
-  **Your views:** More than half of respondents said they always or usually feel safe at school (**57%**), walking to and from school (**64%**), and walking around Didcot during the day (**63%**); whilst only **24%** said they feel always or usually safe walking around Didcot at night. Darkness and strangers were the most common things that made respondents feel unsafe. **75%** said they are or sometimes are influenced by their friends, **36%** are influenced in a mostly positive way and 6% are influenced in a mostly negative way. **88%** said it's not ok to share personal information with a stranger online. **30%** of respondents said social media influenced them in a positive or very positive way, whilst **13%** feel influenced in a negative or very negative way.
-  **Actions:** We have shared a summary report of the results with Didcot TRAIN, which will create videos and a workshop programme around situations, relationships and social media, to help educate young people to reduce gender based harassment and violence.




❖ Review of the Drayton Conservation Area Appraisal Document – Vale of White Horse

-  **We asked** residents to comment on the proposed changes to the conservation area appraisal document, which included a review of the boundary in the following places: 1. inclusion to add the historic core of Sutton Wick and Millennium Green, to the north; 2. inclusion to add an area east of Church Lane; 3. inclusion to add a small area west of Abingdon road, across from High Street. In some areas, the revision was intended to update any issues caused by past mapping and changes to property boundaries, in others the boundary could be extended to add sites of historical and architectural interest.
-  **Your views:** We received **14** completed responses for this consultation, with the majority being from members of the public (**11**). Overall, respondents were supportive of the proposed boundary extensions. Drayton has seen incremental changes over the past decade which respondents are keen to manage with this new appraisal. Some responses include updates and detail which will help to ensure that the adopted appraisal will be as current as possible.
-  **Actions:** The Conservation team is considering all comments received and will make appropriate changes to the [draft document](#) and boundary revision before it's adopted as a Supplementary Planning Document by cabinet. Once adopted, the appraisal can be used to inform planning decisions and we will publish the cabinet report, the new conservation area appraisal document and the adopted revised boundary on our [Conservation Areas webpages](#).






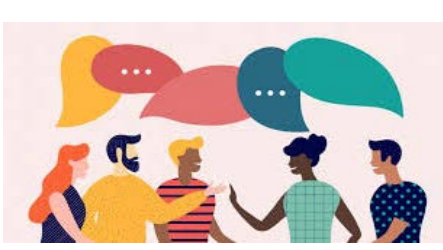
April	May	June	July	August	September	October	November	December	January	February	March	Equalities data
-------	-----	------	------	--------	-----------	---------	----------	----------	---------	----------	-------	-----------------

❖ Review of the Dorchester-on-Thames and Overy Conservation Area Appraisal Document – South Oxfordshire

-  **We asked:** As part of the review process, we invited comments on the proposed change to the conservation area appraisal document with regards to the inclusion of an area of high archaeological interest, an area of open field which straddles the existing road and bridge into Dorchester, south of the conservation area.
-  **Your views:** We received **18** completed responses for this consultation, of which **11** were from Dorchester residents, and **4** from Overy residents. All responses received show support for the proposal to add the field south of Overy to the conservation area. Some responses include updates and detail which will help to ensure that the adopted appraisal will be as current as possible. Other comments discuss further evidence which may be used for ongoing study and review of the conservation areas. Some comments express difficulty in using the appraisal maps to find key information.
-  **Actions:** The Conservation team is considering all comments received and will make appropriate changes to [the draft document](#) and boundary revision before adopting it as a Supplementary Planning Document via the council's cabinet process. Once adopted, the appraisal can be used to inform planning decisions and we will publish the cabinet report, the new conservation area appraisal document and the revised boundary on our [Conservation Areas webpages](#).

❖ Wheatley Neighbourhood Plan Review – South Oxfordshire

-  **We asked:** We invited residents and stakeholders to give their views on the reviewed neighbourhood plan that Wheatley parish council has submitted to South Oxfordshire district council. If adopted, the reviewed plan will replace the Wheatley Neighbourhood Development Plan that was adopted on 20 May 2021. This project was run in collaboration with the Neighbourhood Planning team.
-  **Your views:** [The list of comments](#) received during the publicity period is now available to view online. You can also head to our website to review all the [supporting documents](#) submitted ahead of the consultation.
-  **Actions:** The draft plan documents and comments received have been submitted for independent examination. Andrew Ashcroft has been appointed by the district council to carry out the examination. The examiner has issued [the examination arrangements](#). The examiner's role is to make recommendations on the draft plan and decide if the plan should proceed to referendum. The examiner has now issued [a Clarification Note](#), which sets out initial comments on the submitted plan and areas where further clarification would be helpful.



April	May	June	July	August	September	October	November	December	January	February	March	Equalities data
-------	-----	------	------	--------	-----------	---------	----------	----------	---------	----------	-------	-----------------

❖ Beckley and Stowood Neighbourhood Plan – South Oxfordshire



We asked: residents and stakeholders to give their views on the new neighbourhood plan which has been submitted to South Oxfordshire district council. The plan will influence the way the area grows and develops in the future. The publicity period closed on 2 March 2023. This project was run in collaboration with the Neighbourhood Planning team.

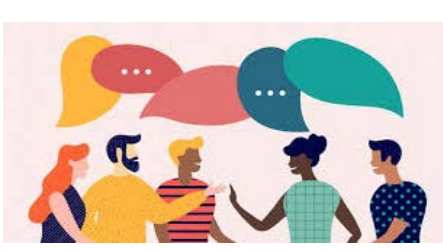


Your views: [The list of comments](#) received during the publicity period is now available to view online. You can also head to our website to review all the [supporting documents](#) submitted ahead of the consultation.





Actions: The [draft plan documents](#) and comments received have now been submitted for independent examination. Andrew Ashcroft has been appointed by the district council to carry out the examination. The examiner has issued [the examination arrangements](#). The examiner's role is to make recommendations on the draft plan and decide if the plan should proceed to referendum. The examiner has now issued [a Clarification Note](#), which sets out initial comments on the submitted plan and areas where further clarification would be helpful.






❖ Review of the Stanford in the Vale Conservation Area Appraisal Document – Vale of White Horse


 **We asked:** The Conservation team invited comments on the following proposed changes to the conservation area appraisal document: 1. the addition of green verges at the western end of the High Street and the former orchards adjacent to Orchard House and 17 Upper Green; 2. the additions of 9-10, 15-24, 27 Horsecroft and 35 High Street; 3. the removal of 25-27 High Street; 4. small boundary adjustments at Bear House, Cox’s Hall, Penstone’s Court and Hunter’s Piece.


 **Your views:** We received **14** completed responses, of which **9** were from individuals/members of the public. Overall, there was support for the appraisal document and boundary revisions. The Parish council suggested to extend the boundary further east of Horsecroft. A recent PhD thesis about Stanford in the Vale was brought to our attention along with comments from a local history group which will be used to update areas of the appraisal with the latest findings. A number of small factual corrections were noted and will be implemented in the final draft.

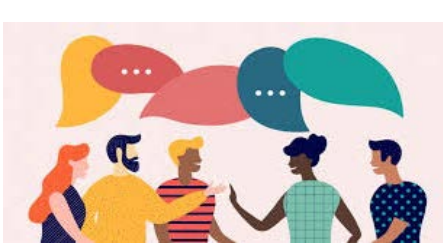
 **Actions:** The Conservation team is considering all comments received and will make appropriate changes to the [draft document](#) and boundary revision before we proceed to adopt it as a Supplementary Planning Document via the council’s cabinet process. Once adopted, the appraisal can be used to inform planning decisions and we will publish the cabinet report, new conservation area appraisal document and adopted revised boundary on our [Conservation Areas webpages](#).

❖ Review of the Cuxham Conservation Area Appraisal Document– South Oxfordshire

 **We asked:** We invited comments on the Cuxham [Conservation Area Appraisal document](#) which, if adopted, will be used to support planning decisions in the area. No boundary changes were proposed as part of this consultation.

 **Your views:** We received **11** completed responses for this consultation, of which **9** were from individuals/members of the public. Overall, there was a general support for the appraisal; comments of praise for the presentation and characterization of the village. Cuxham has seen incremental change over the past decade which some respondents are keen to manage with the aid of this new appraisal. Some responses include updates and additional detail which will help to ensure an adopted appraisal will be as current as possible.

 **Actions:** The Conservation team is considering all comments received and will make appropriate changes to the [draft document](#) and boundary revision before we proceed to adopt it as a Supplementary Planning Document via the council’s cabinet process. Once adopted, the appraisal can be used to inform planning decisions and we will publish the cabinet report, new conservation area appraisal document and adopted revised boundary on our [Conservation Areas webpages](#).

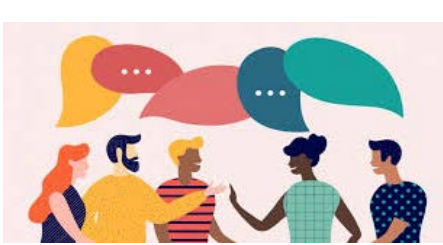


In February 2023 we launched the following ongoing sign-up form:

- ❖ **Equalities database sign-up form:** We are committed to delivering excellent services and we want to ensure we are listening to all groups in our community through our consultations and engagement. This is why we are giving voluntary organisations and community groups that represents any of the protected characteristics the opportunity to sign up to be part of our equalities database(*). All groups that sign up will be invited to take part in our consultations and share their thoughts and ideas with the councils.

* The protected characteristics are defined by the 2011 Equality Act and refer to: age, gender reassignment, being married or in a civil partnership, being pregnant or on maternity leave, disability, race including colour, nationality, ethnic or national origin, religion or belief, sex and sexual orientation





In March 2023 we have launched the following expression of interest and feedback forms:

❖ **UK Shared Prosperity Funding (UKSPF) – expression of interest form:**

South Oxfordshire and Vale of White Horse district councils have been awarded £1m each through the [UK Shared Prosperity Fund](#). Most of the funding will not be available until 2024/25, however, we've already started work on our early-stage projects. This expression of interest form will capture information on local projects to help us consider funding options. We are asking businesses and organisations to pitch any project ideas that could meet the requirements outlined in our plan.

❖ **Waste and recycling session on food waste (topic 4): teachers feedback:**

From September 2022 officers in the Waste team have been delivering a series of presentations and workshops to schools around our districts on the topics of: 1. general recycling and waste; 2. anti littering; 3. reduce and reuse over Christmas; 4. **food waste**; 5. environmental engineering and bees. After each session we tried to capture feedback from both teachers and students. This comment form asked teachers for their opinions on the presentation, if they thought it was delivered clearly and in an engaging way, whether they had found the workshop activity informative, and if they felt students' knowledge of food waste had improved after the session



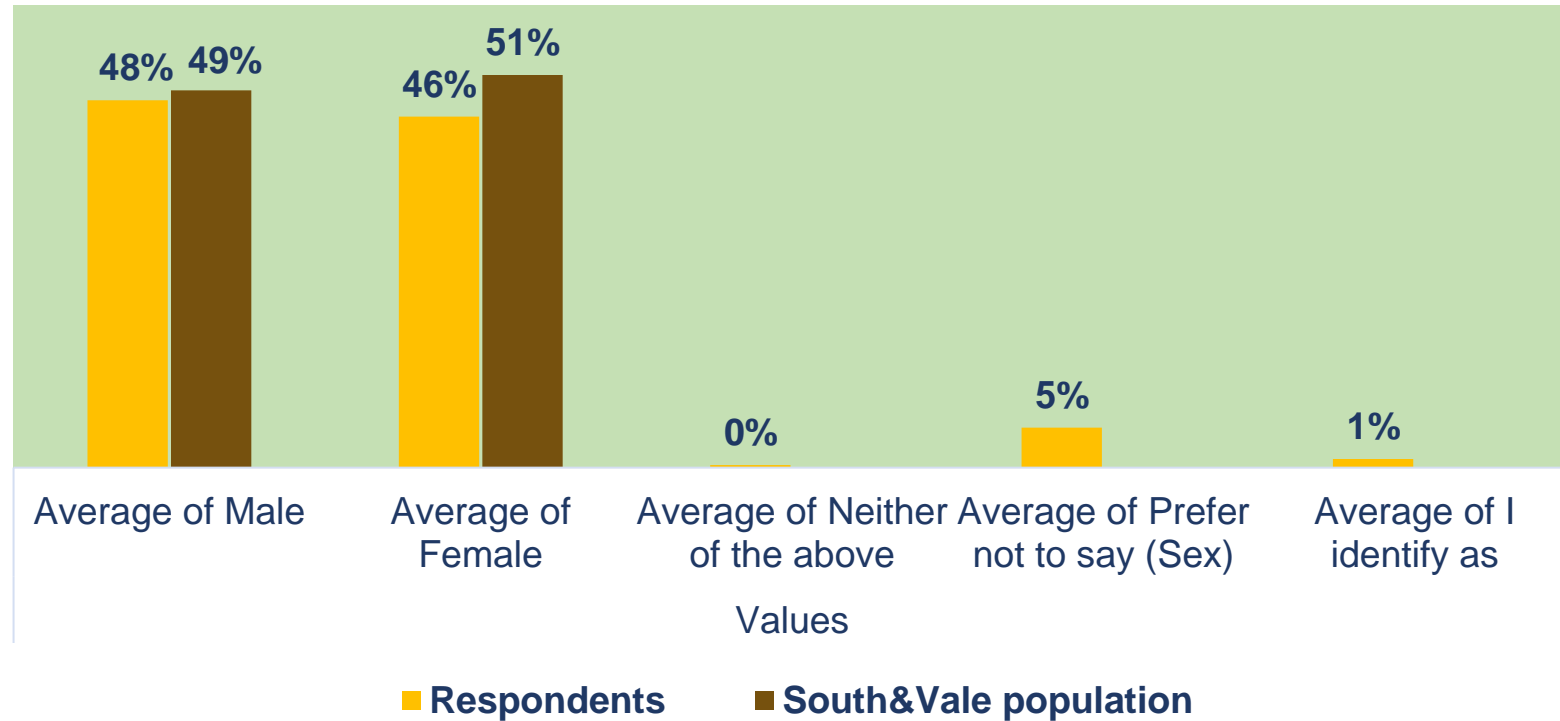
❖ **Waste and recycling session on food waste (topic 4): students feedback:**

This feedback form asked students for their opinions on the presentation and workshop delivered by the Waste team.

The above two feedback forms have closed but are part of an ongoing project whose results are not yet available.



❖ Gender



In 2022/23 we started collecting data on gender, age, ethnicity and disability of respondents. This helps us understand if we are reaching all groups in our communities, and see where we need to increase participation and representation.

As we only routinely began collecting this data in 2022/23, we'll be monitoring it to identify future trends.

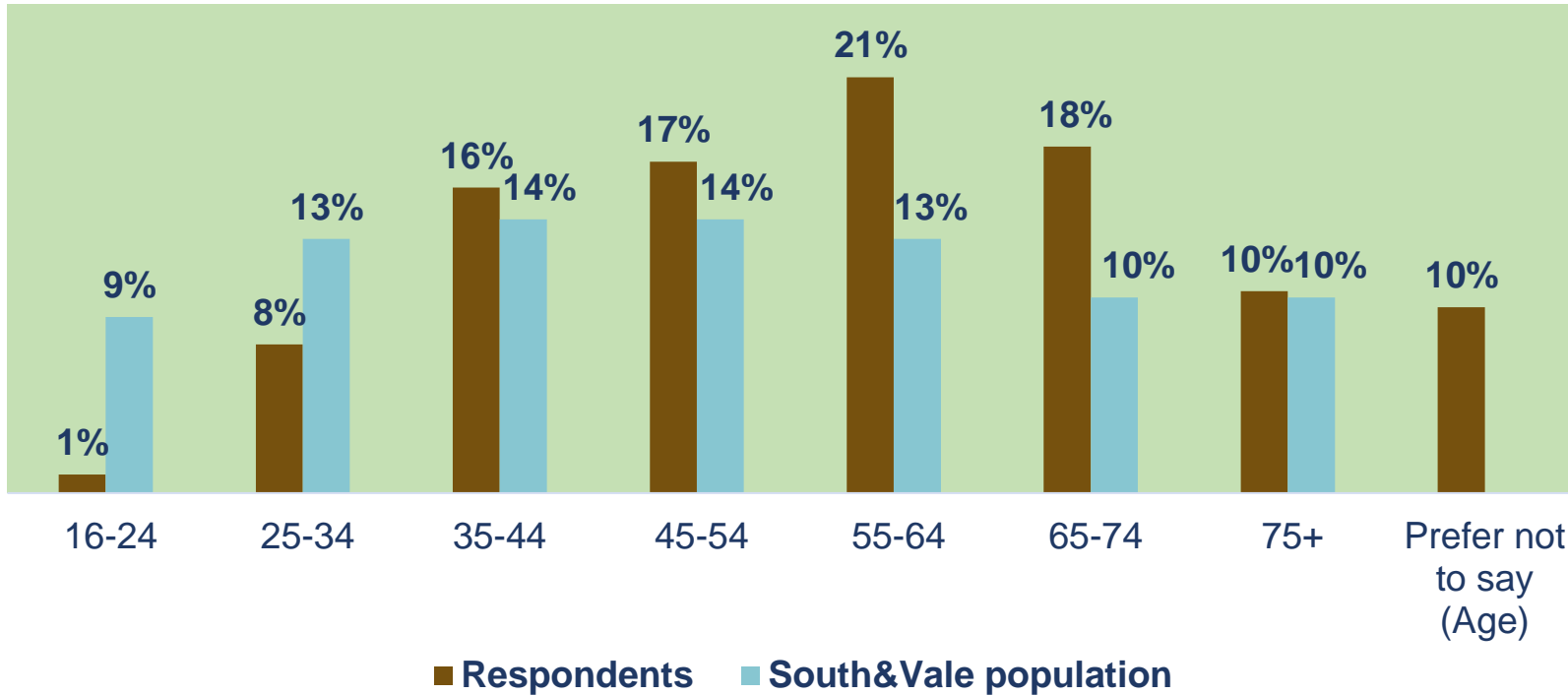
This chart shows the proportion of respondents by gender category as an average of all consultations run in 2022/23 for which data is available. This proportion is then compared with actual population data(*).

On average, 48% of respondents identified as male and 46% as female. Female respondents appear to be slightly underrepresented when compared to population data. However, since 5% of respondents preferred not to answer this question, the actual split between genders could be different. On average, 1% of respondents selected the option “I identify as” and then left further comments to clarify.

* Actual population data for gender, age group and ethnicity is drawn from the Census 2021 and downloaded from Local Insight.



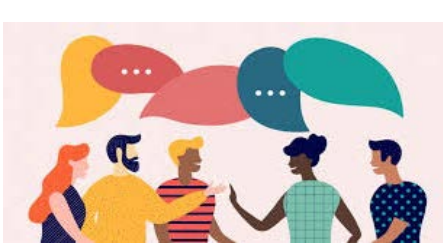
❖ Age



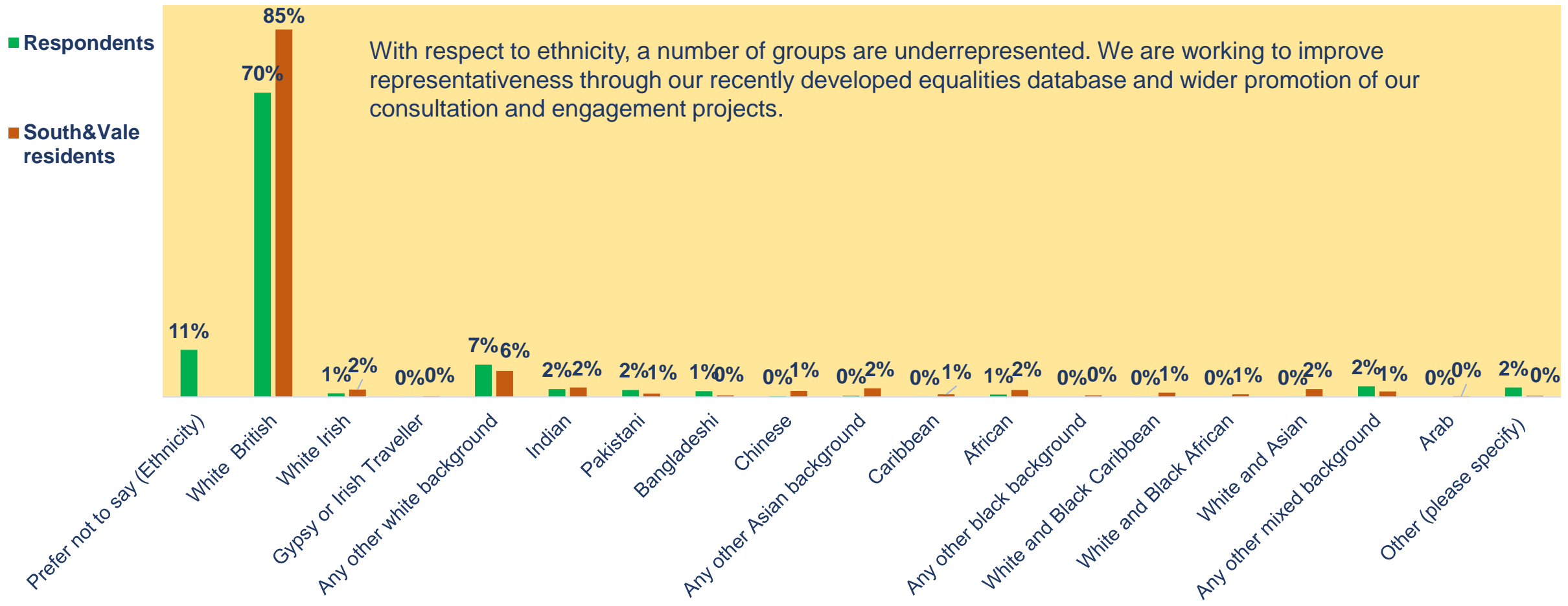
This chart shows the proportion of respondents by age-group as an average of all consultations. Each proportion is then compared with actual population data, which is represented by the light blue columns.

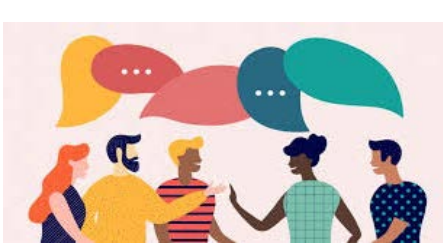
There are two age groups which are well or fairly well represented in our consultations: 35-44-year-olds and 75+. Younger cohorts (16-24 and 25-34-year-olds) are under-represented, whilst all other age groups (45-54, 55-64 and 65-74-year-olds) appear to be over-represented.

The biggest gap between respondents and actual population is recorded for 16-24-year-olds, who are under-represented by 8%, and for 55-64 and 65-74-year-olds, who are over-represented by the same margin.



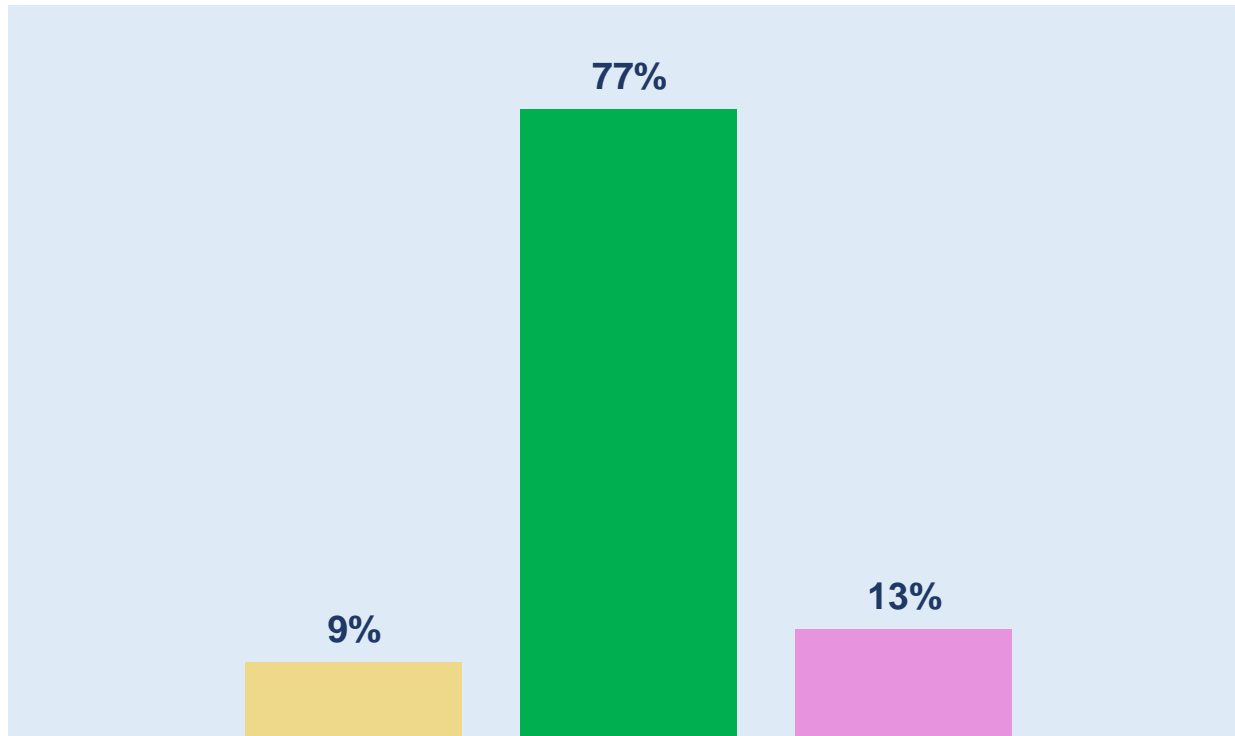
❖ Ethnicity





April	May	June	July	August	September	October	November	December	January	February	March	Equalities data
-------	-----	------	------	--------	-----------	---------	----------	----------	---------	----------	-------	-----------------

❖ Disability



- Long disability/illness
- No long disability/illness
- Prefer not to say (disability)

On average over all our consultations, 77% of respondents said that their daily activities are not affected by disability or long-term illness, whilst 13% are affected by this and a further 9% prefer not to say.

This compares with 14% of people within the actual South and Vale population who said they have a limiting long-term illness, health problem or disability which affects their daily activities(*). This means that our consultations are representative of the actual population when it comes to disability. Population data for this group is taken from the [Census 2021](#).

(*) This figure is the average for both districts. The individual proportions of people with disability are 13.7% for South Oxfordshire and 14.3% for the Vale of White Horse.