



Oxfordshire
Inclusive Economy
Partnership

OIEP Progress Report

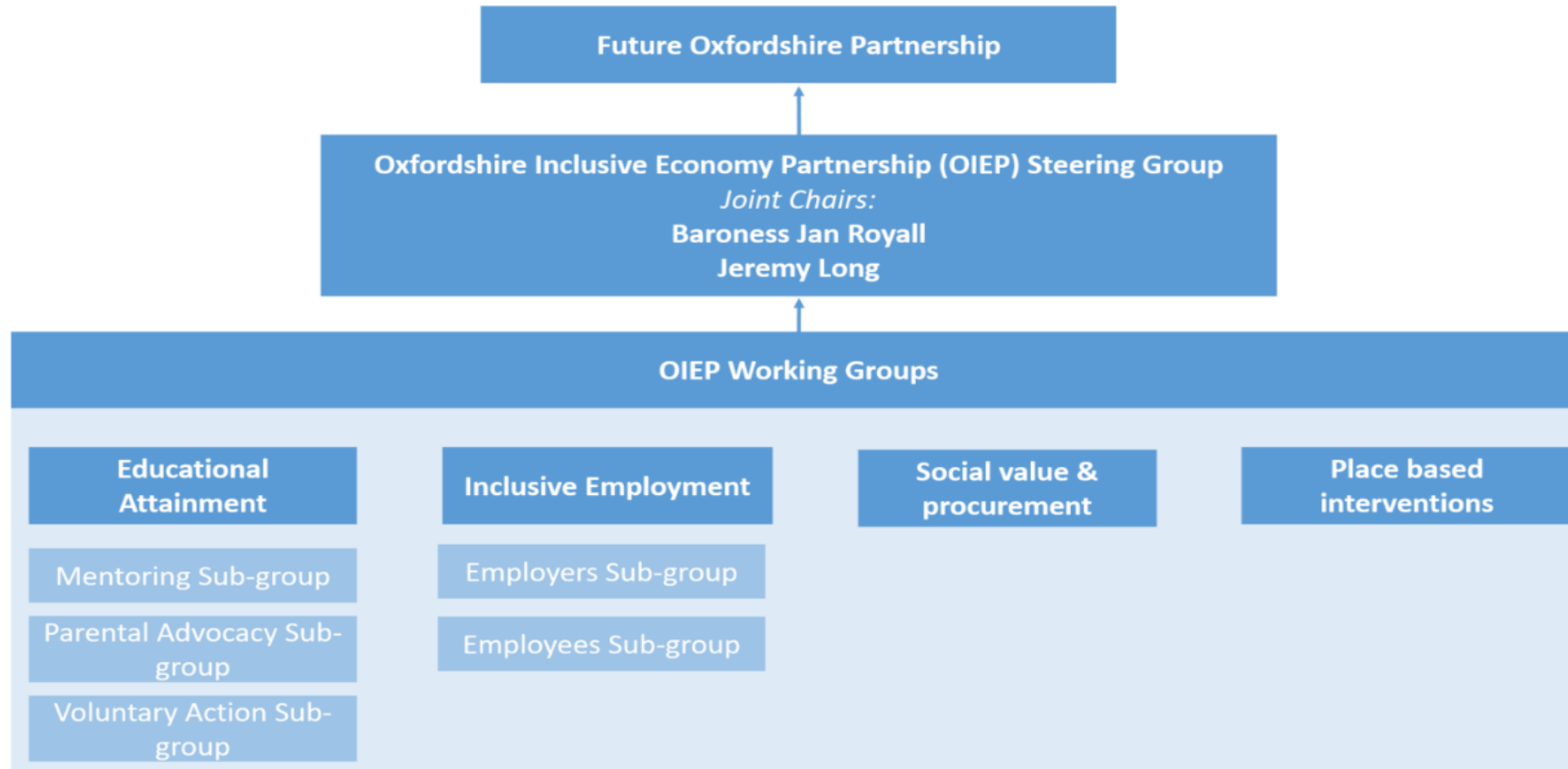
Future Oxfordshire Partnership

13th June 2023

Mission:
“working together to create a more equal region that creates opportunities and benefits for all people within the county”



**Oxfordshire
Inclusive Economy
Partnership**



OIEP Strategy and Delivery Plan



- OIEP Delivery Plan 2023-2024:
 - based on agreed proposals from each working group
 - sets out activity for the next 12 months
- Draft OIEP Strategy 2023-2026 - long term vision and how we will reach our goals and objectives

Delivery Plan Updates



- **Educational Attainment**

- ARCh – (Assisted Reading for Children)
 - Support applying for a grant which
 - 9 organisations that have signed the charter have pledged to provide ARCh volunteers and one has also pledged funding.
- Parent Power – feasibility study drafted for the implementation of Parent Power in another area of Oxfordshire.

- **Inclusive Employment**

- Establishing an OIEP HR network
- Prison leavers – OIEP will be holding the first HR network in July on the recruitment of prison leavers in Banbury.
- September - prison open day for employers at Bullingdon Prison
- Working with partners to develop an employment framework for refugees

- **Social Value and Procurement**

- Feasibility project applying for funding for a social value brokerage system for use across Local Authorities

- **Place Shaping**

- Working with each of the other working groups to provide data and insight for targeted approach to projects

Oxfordshire Inclusive Economy Charter

Actively supporting inclusivity across Oxfordshire's economy will generate real benefits for your organisation. Environmental, Social and Governance (ESG) factors are increasingly being considered by employees, customers, funders, investors, and partners. Participating in the work of the Oxfordshire Inclusive Economy Partnership, through the pledges you make within this Charter, provides a way of demonstrating your commitment to social issues:

- Promoting your role in Oxfordshire's inclusive economy work will help you to attract people to work with you.
- Accessing the widest pool of talent will support growth and productivity within your company or organisation.
- Purchasing from local suppliers and supporting your staff to undertake volunteering activities within the community will contribute to well-being and a sense of loyalty among your employees, differentiating your organisation from competitors.

Joining the work of the Partnership is not only a good thing to do, but it will make a difference to your business too.

By signing this Charter, you are demonstrating your support for and commitment to making Oxfordshire a fairer and more inclusive place to live and work.

Charter pledges

As a group of employers, we recognise the importance and value of supporting an inclusive Oxfordshire. We are committed to improving all aspects of social mobility and increasing shared prosperity for both our communities and residents by taking action on these pledges:



Improve training and educational attainment

Creating workplaces where employees can thrive and grow and supporting educational programmes for children

Recruit inclusively

Making jobs accessible for all residents and hiring from diverse communities



Offer opportunities into work

Supporting those furthest from the labour market on their journey towards secure employment

Support local and social economy

Using our buying power to support the local economy and maximise social value



Provide fair wages

Ensuring employees have a fair and decent wage

Sharing resources, skills and assets

Practical ways to ensure goods and services are accessible to all



Oxfordshire
Inclusive Economy
Partnership



Abingdon and Witney College Activate Learning Amey Blenheim Palace and Blenheim Estate
 CBRE Ltd Cherwell District Council Community First Oxfordshire Ellison Oxford Limited Flexicare
 Jessop & Cook Architects Learn with Cognitive Analytic Therapy Oxfordshire
 Mental Health Natters Mills and Reeves Old Fire Station Oxentia Ltd
 Oxford Human Capital incorporated Oxford University Hospitals Foundation Trust Oxford University Innovation
 Oxford Wood Recycling Oxfordshire County Council Oxfordshire Play Association
 Pegasus Theatre Prorus RAW SOFEA St Johns College Voi Technology

Charter Progress



- Almost 50 organisations signed or in process of signing
- Total number of pledges: approx. 600
- Example of direct impact:
 - Apprenticeship Levy transfer: 5
 - Donation of devices to Getting Oxfordshire On-line: 10
 - Volunteers for ARCh: 9
 - OxGrow mentoring: 5
 - Oxford Living Wage: 17

Fundraising



- A fundraising working group has been established with the overarching aims to:
 - Fund and scale the work of the OIEP
 - Ensure the OIEP is sustained as an effective partnership With appropriate secretariat and management resource
 - Seek a variety of funds most appropriate to local needs
 - Seek an element of investment and recyclable funds

Communication

- Raising profile of the charter and engaging more businesses to sign up
- New website - will enable a bespoke approach to how we present and share information for the OIEP and will create a more interactive experience for users.

Recommendation



Oxfordshire
Inclusive Economy
Partnership

- That the Future Oxfordshire Partnership notes and comments on the update report