



**OXFORDSHIRE LOCAL
NATURE PARTNERSHIP**

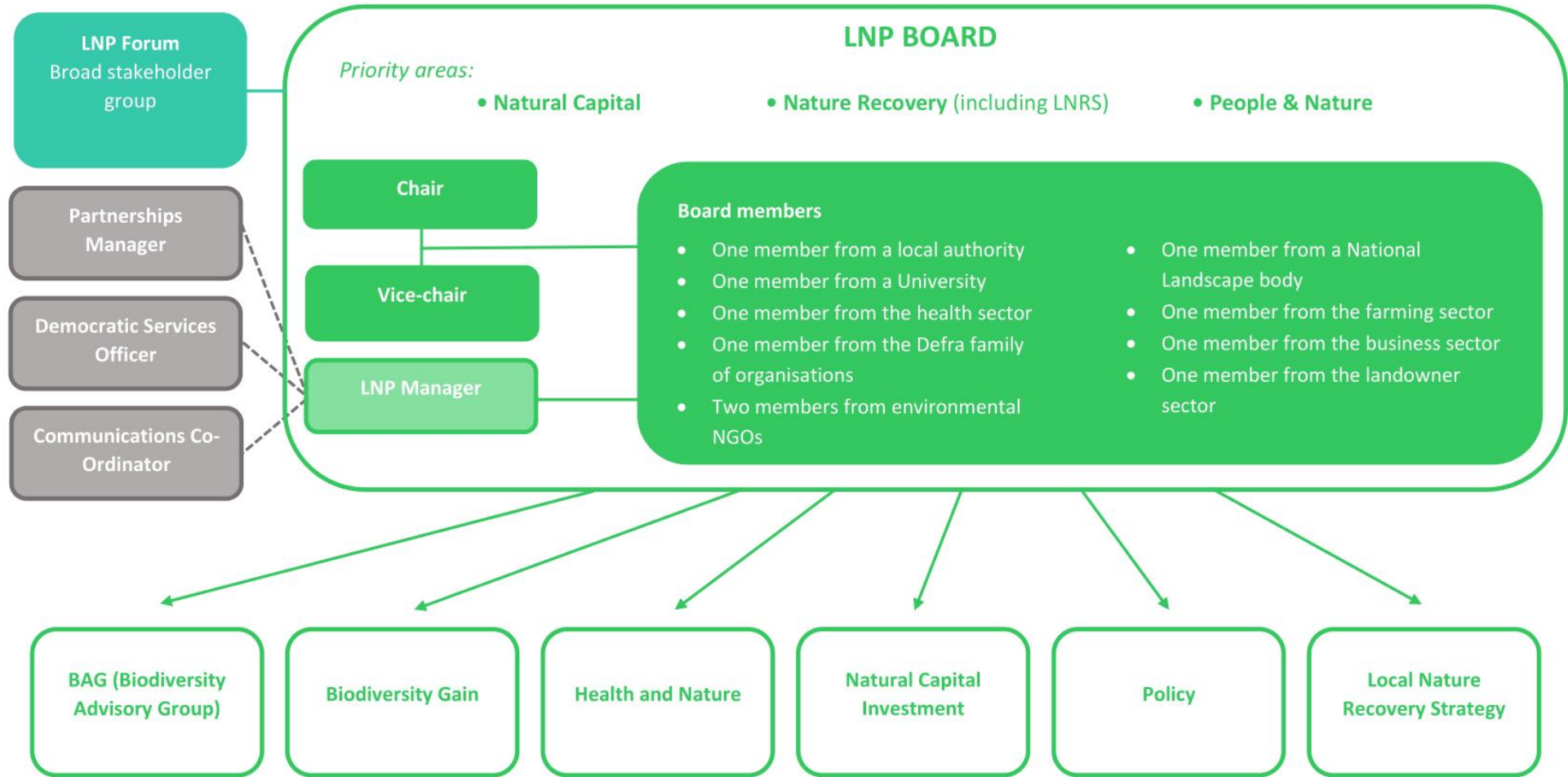
Radically enhancing nature, its positive impact on our climate and the priority it's given, helping to make Oxfordshire a county where people and nature thrive

Matt.whitney@southandvale.gov.uk

Timeline to establishment



Oxfordshire Local Nature Partnership



KEY

- Working sub-groups**
Made up of an LNP Board member & representatives from relevant sectors – responsible for delivering LNP objectives.
- Volunteer board members**
Providing governance for the LNP.
- LNP Manager**
Employed by Oxon Local Authorities and responsible for the running of the LNP.
- Secretariat, management & comms support**
Employed by local authorities and working with LNP Manager in a business support relationship.
- LNP Forum**
Broad stakeholder group - ensures decisions of board are fully informed by the views of LNP members.

OLNP alignment with Council priorities

Strategic Vision outcomes:

- Our natural environment will be in a better state than that in which we found it
- We will already be carbon neutral and be accelerating towards a carbon negative future
- Our residents will be happier and healthier, and overall wellbeing will have improved

Council priorities

- Helping deliver forthcoming environmental obligations (LNRS, BNG)
- Working with farmers and rural communities
- Equitable approach to green infrastructure for healthy place-shaping and adaptation to climate change

Other strategic priorities

- Helps deliver land-use elements of PAZCO



Our partners





LNP Strategic Priorities

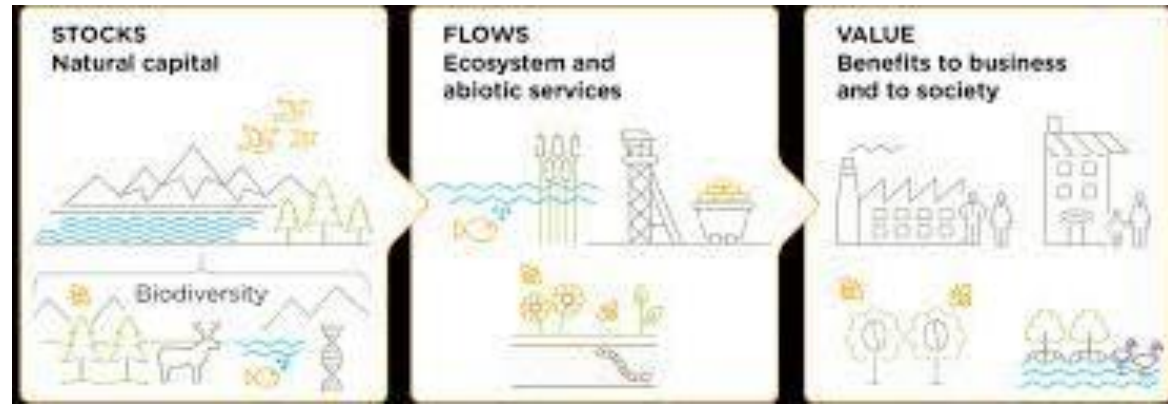
Still in development phase, but working towards:

- **FACILITATE** partners to collaboratively deliver nature's recovery in Oxfordshire
- **ENABLE** a programme of natural capital investment
- **PROMOTE** greater equality in access to nature for health and wellbeing
- **INFLUENCE** planning to ensure better outcomes for people and nature
- **INCLUDE** all partners in the work of the LNP

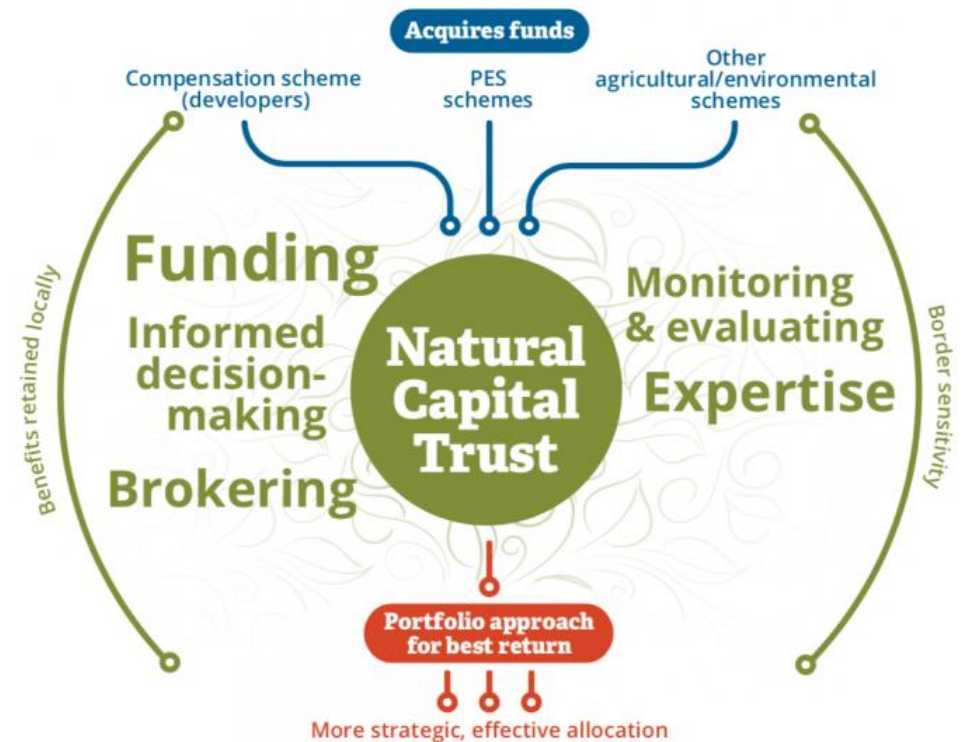
Questions from the FOP report

1. That the Future Oxfordshire Partnership endorses our strategic approach, including the development of a county-wide framework of natural capital investment.
2. That the Future Oxfordshire Partnership provides its endorsement for Oxfordshire County Council taking on the responsible authority role for the production of Oxfordshire's Local Nature Recovery Strategy
3. That the Future Oxfordshire Partnership provides its endorsement to proceed with the work of an Oxfordshire Local Nature Recovery Strategy considering the information provided, under the proposed governance arrangement.

Spotlight – Natural Capital Investment



- **What is it?**
 - Leverage private money to pay for environmental enhancements
 - £6bn pa gap in funding to meet national nature targets
- **How will it help?**
 - Carbon credits and BNG are a wild west.
 - We will developing an Oxon-wide framework that aligns with delivery of strategic objectives, with additional benefits
- **Specifically?**
 - Developing an Oxfordshire Natural Capital Investment Plan
 - Working with farmers, funders, planners, wildlife charities and business to co-design the best solution
 - Secured limited resource from University of Oxford to support





**OXFORDSHIRE LOCAL
NATURE PARTNERSHIP**

Any questions?

Matt.whitney@southandvale.gov.uk