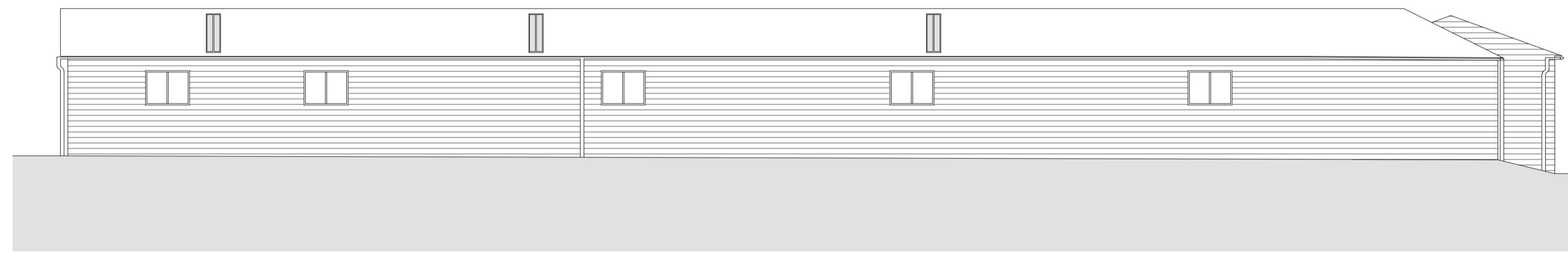


Appendix 1

0 1 2 3 4 5
VISUAL SCALE (1:100)
NOTE:
ALL DIMENSIONS MUST BE CHECKED ON SITE AND NOT SCALED FROM
THIS DRAWING.
FOR USE IN PRECISE NAMED LOCATION ONLY. COPYRIGHT RESERVED



EAST ELEVATION - COURTYARD



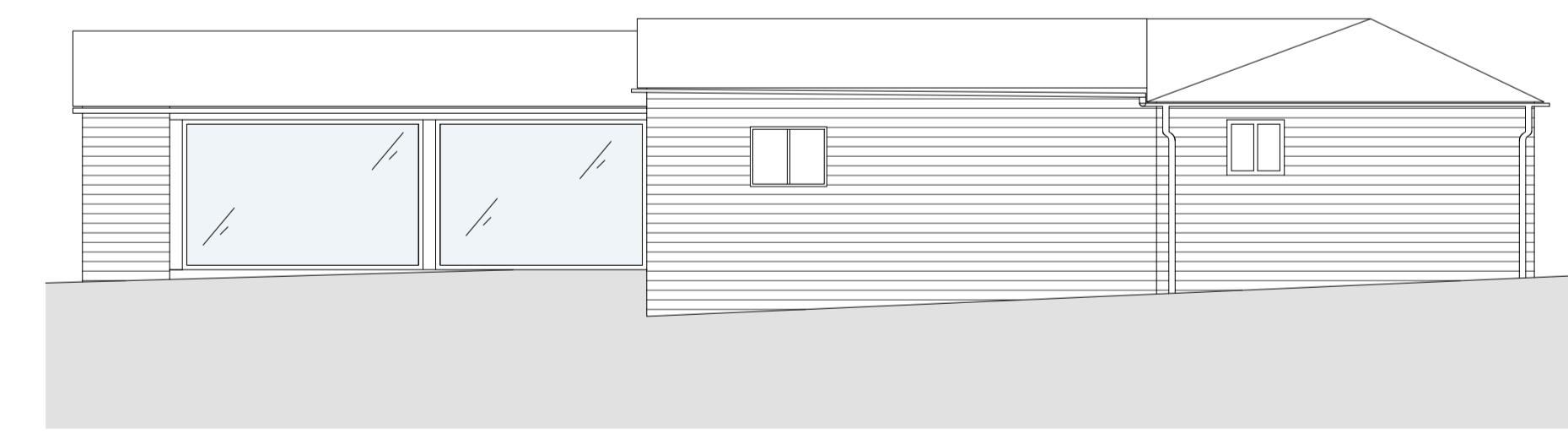
NORTH ELEVATION



WEST ELEVATION



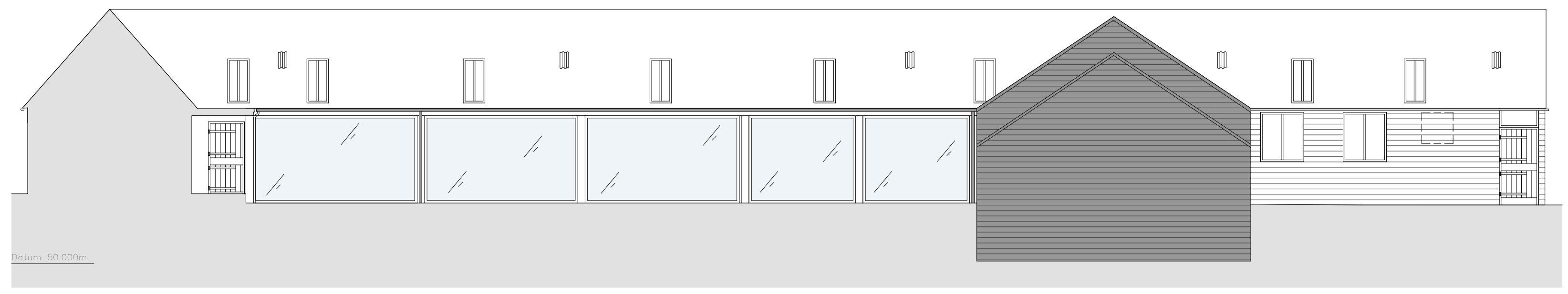
SOUTH ELEVATION



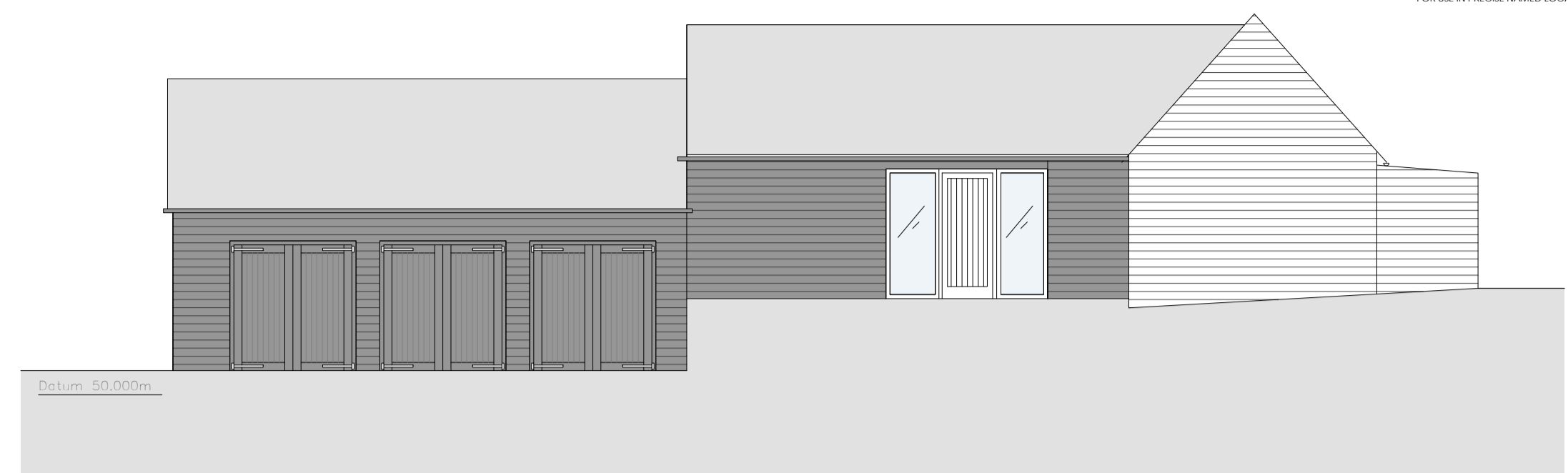
EAST ELEVATION

A 06/10/21 General Update
revision date description
status
PRELIMINARY
project title
Antwick Stud, Letcombe Regis
drawing title
UNIT 1 - PROPOSED ELEVATIONS
first issued drawn scale # of A1
21/05/21 MAC 1:100
job/drawing reference
21016 - PE0010 - A
The Studio, 70 Church Road, Wheatley, Oxford, OX33 1LZ
01865 873956 | info@andersonorr.com | www.andersonorr.com

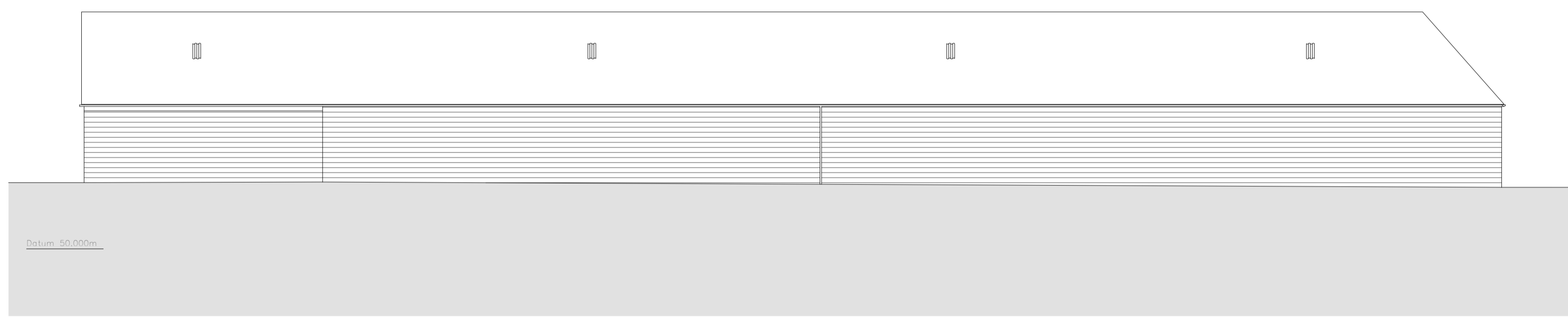
Anderson Orr
Architects



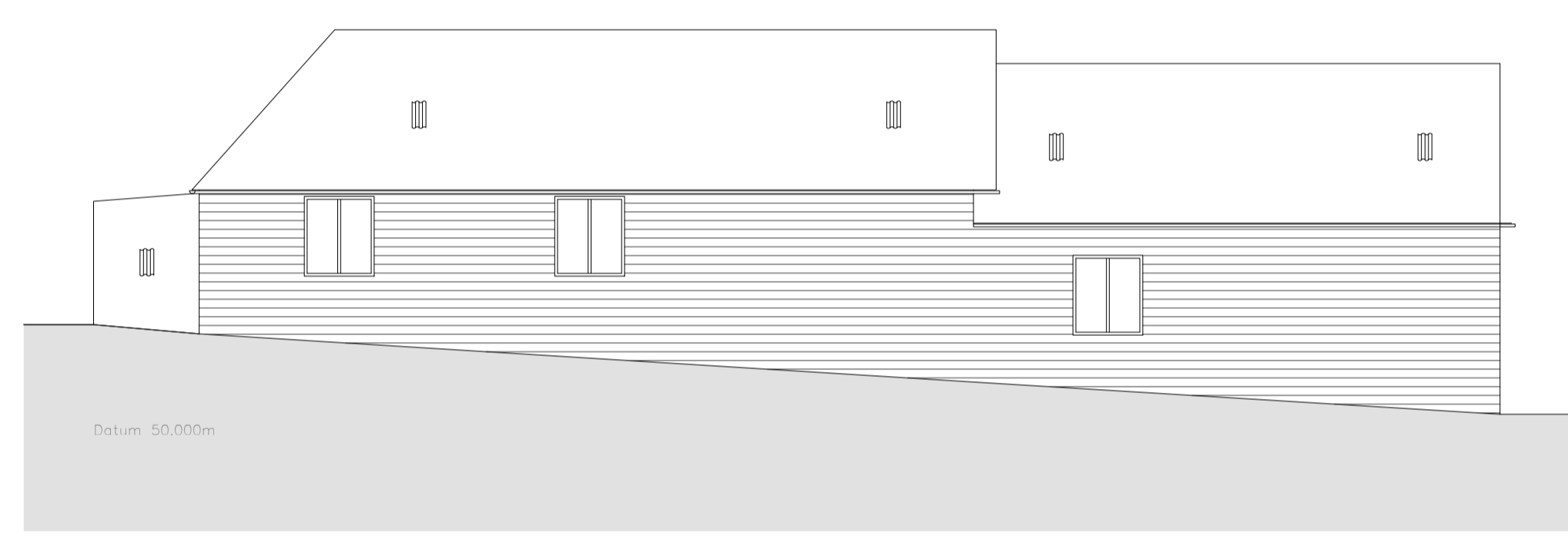
SOUTH ELEVATION - COURTYARD



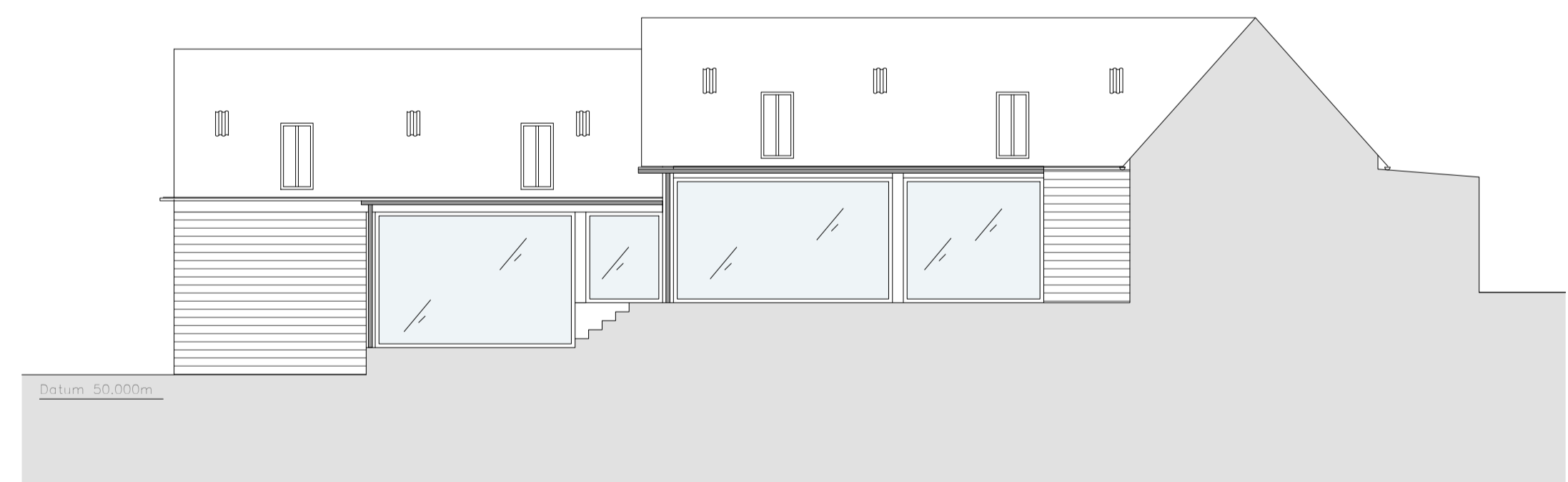
EAST ELEVATION



NORTH ELEVATION



WEST ELEVATION

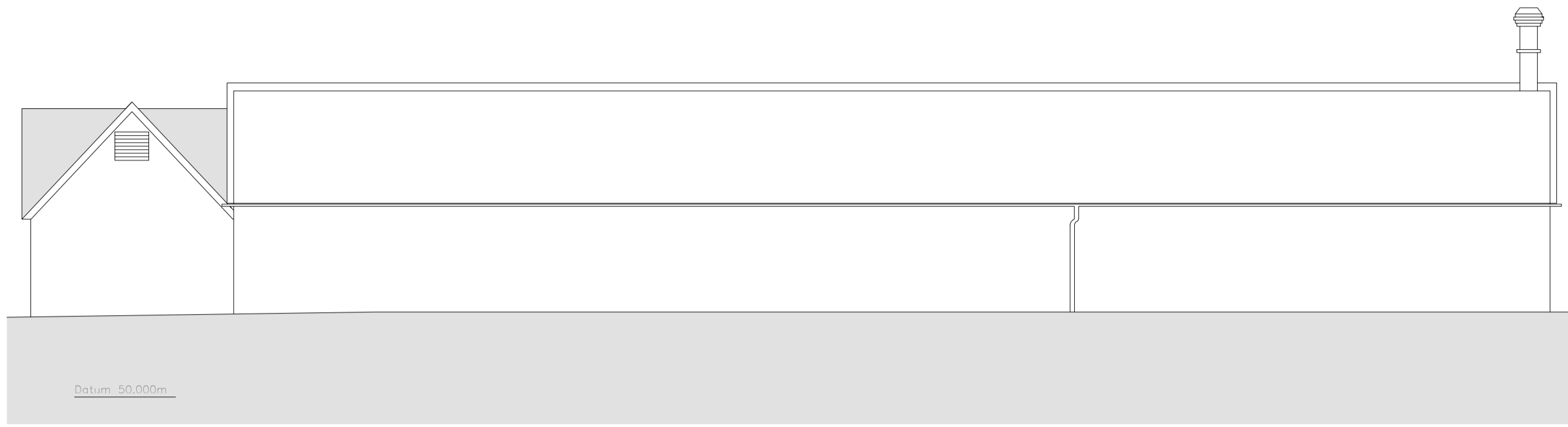


EAST ELEVATION (IN COURTYARD)

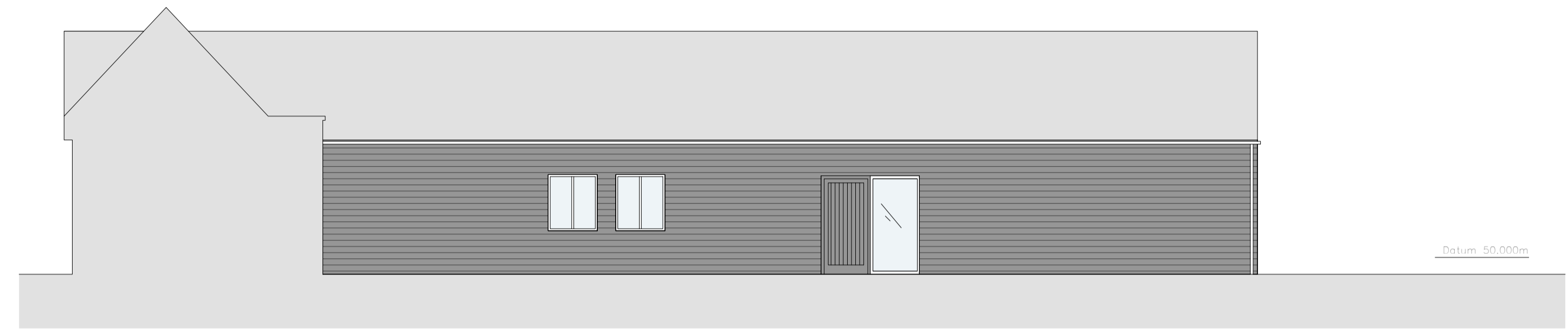


WEST ELEVATION (IN COURTYARD)

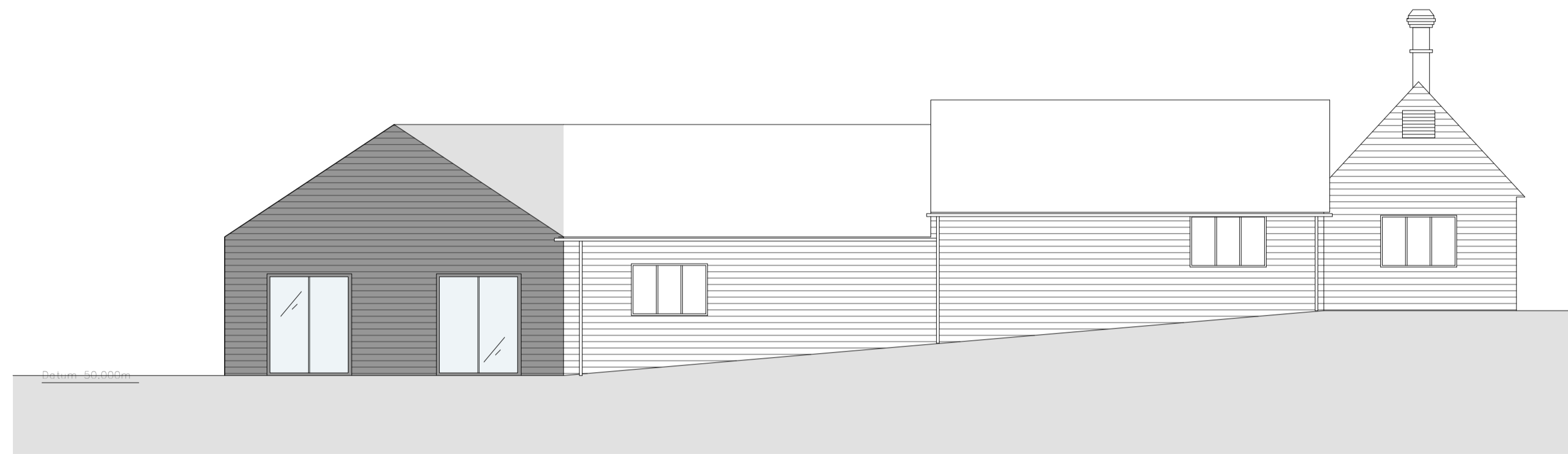
C 13/04/22 General Updates
 B 24/03/22 General Updates
 A 06/10/21 General Updates
 revision date description
 status
PRELIMINARY
 project title
 Antwick Stud, Letcombe Regis
 drawing title
UNIT 2 - PROPOSED ELEVATIONS
 first issued drawn scale # of A1
 21/05/21 MAC 1:100
 job/drawing name/description
21016 - PE0011 - C
 The Studio, 70 Church Road, Wheatley, Oxford, OX33 1LZ
 01865 873956 | info@andersonorr.com | www.andersonorr.com



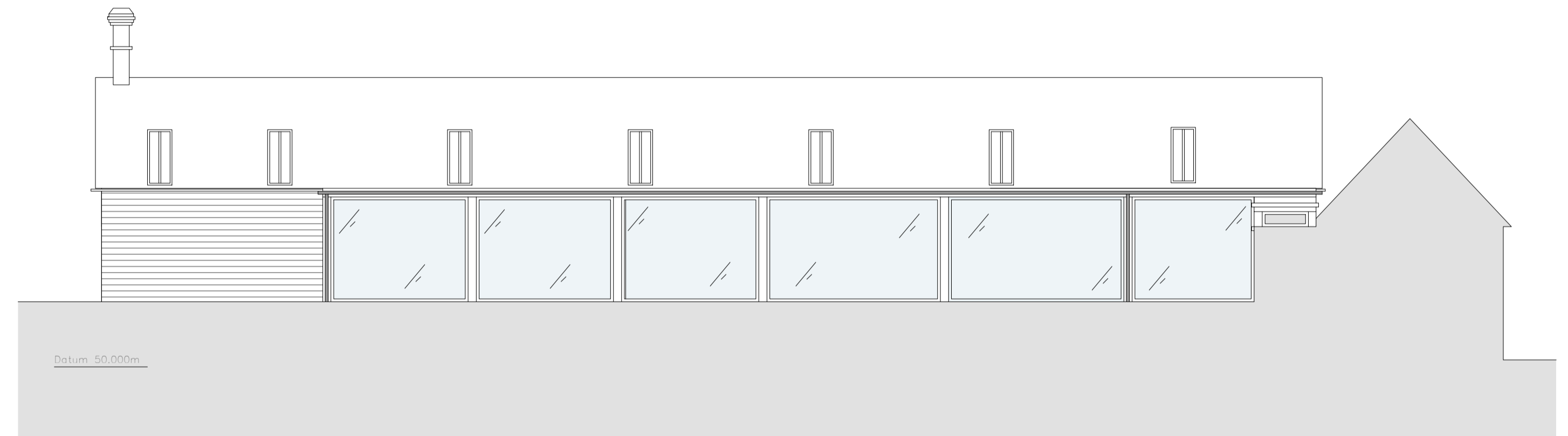
NORTH ELEVATION



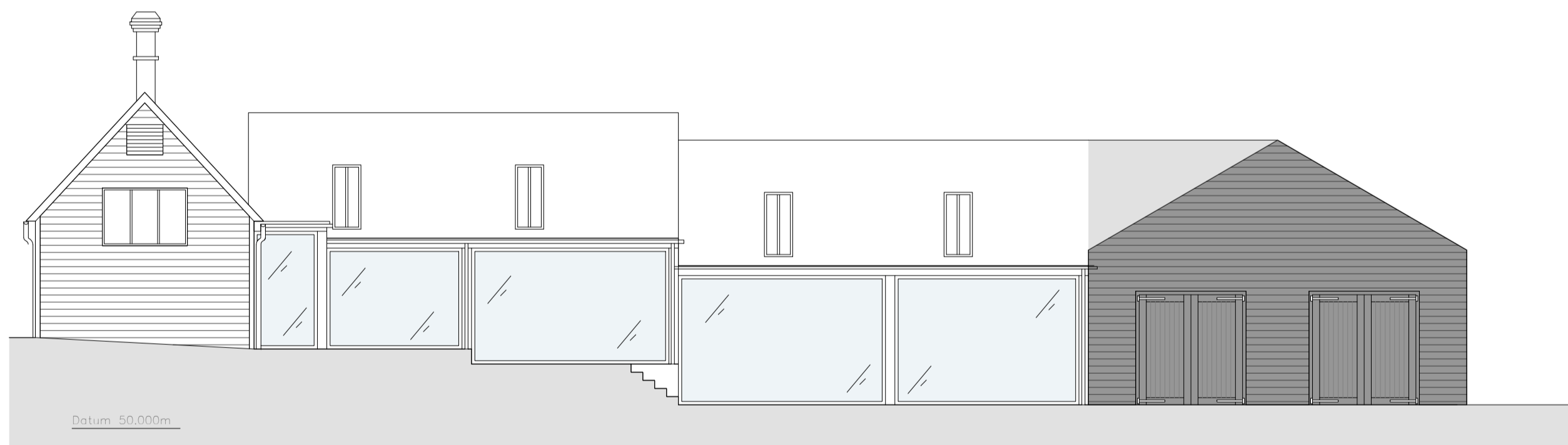
NORTH ELEVATION - COURTYARD



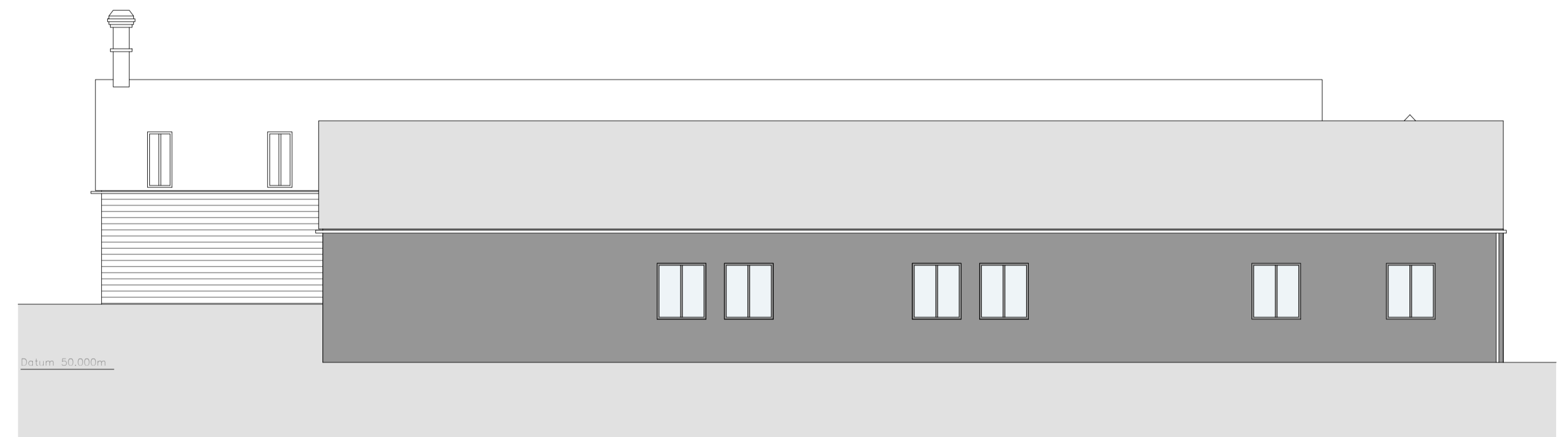
EAST ELEVATION



SOUTH ELEVATION - COURTYARD

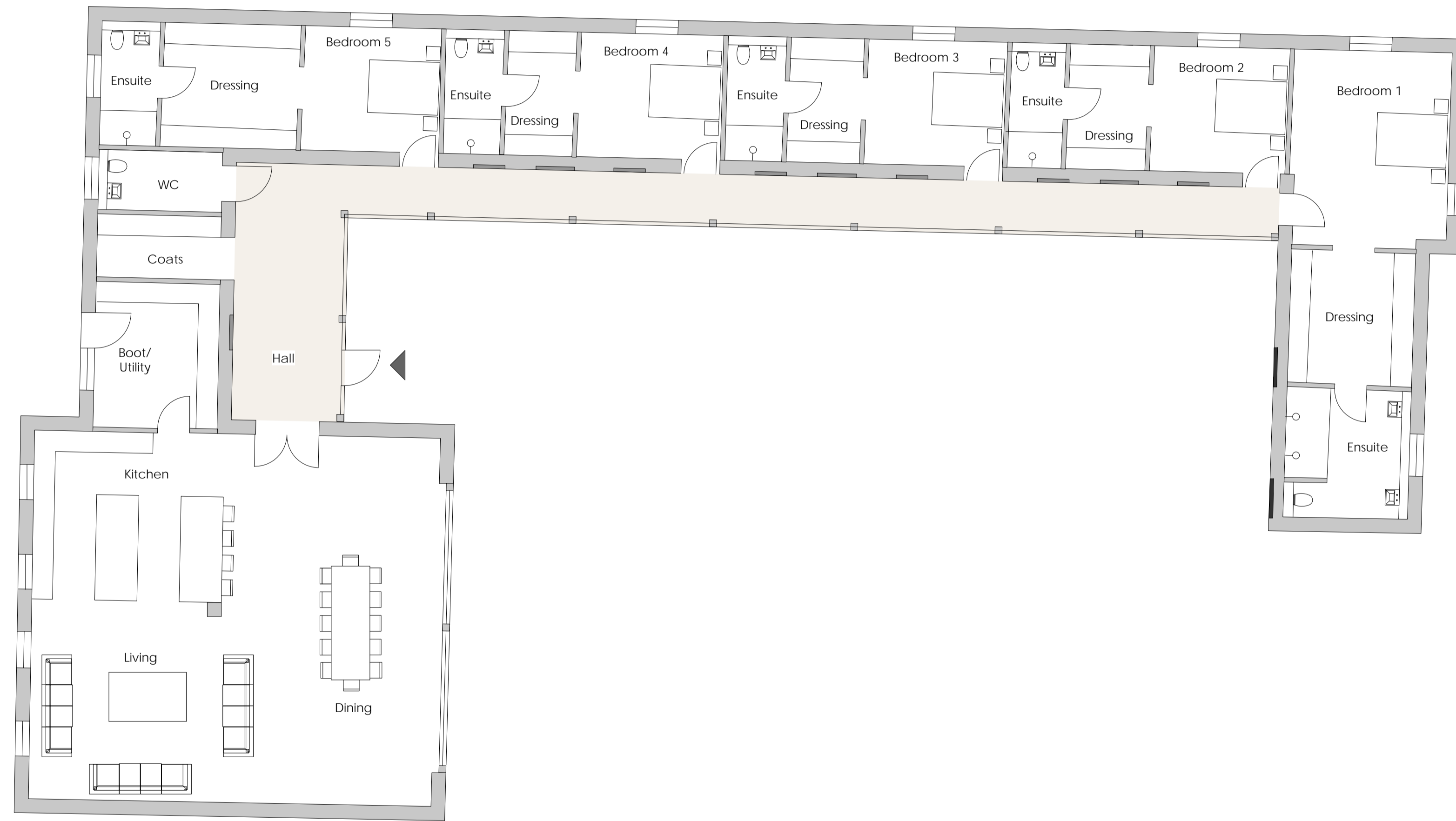


WEST ELEVATION

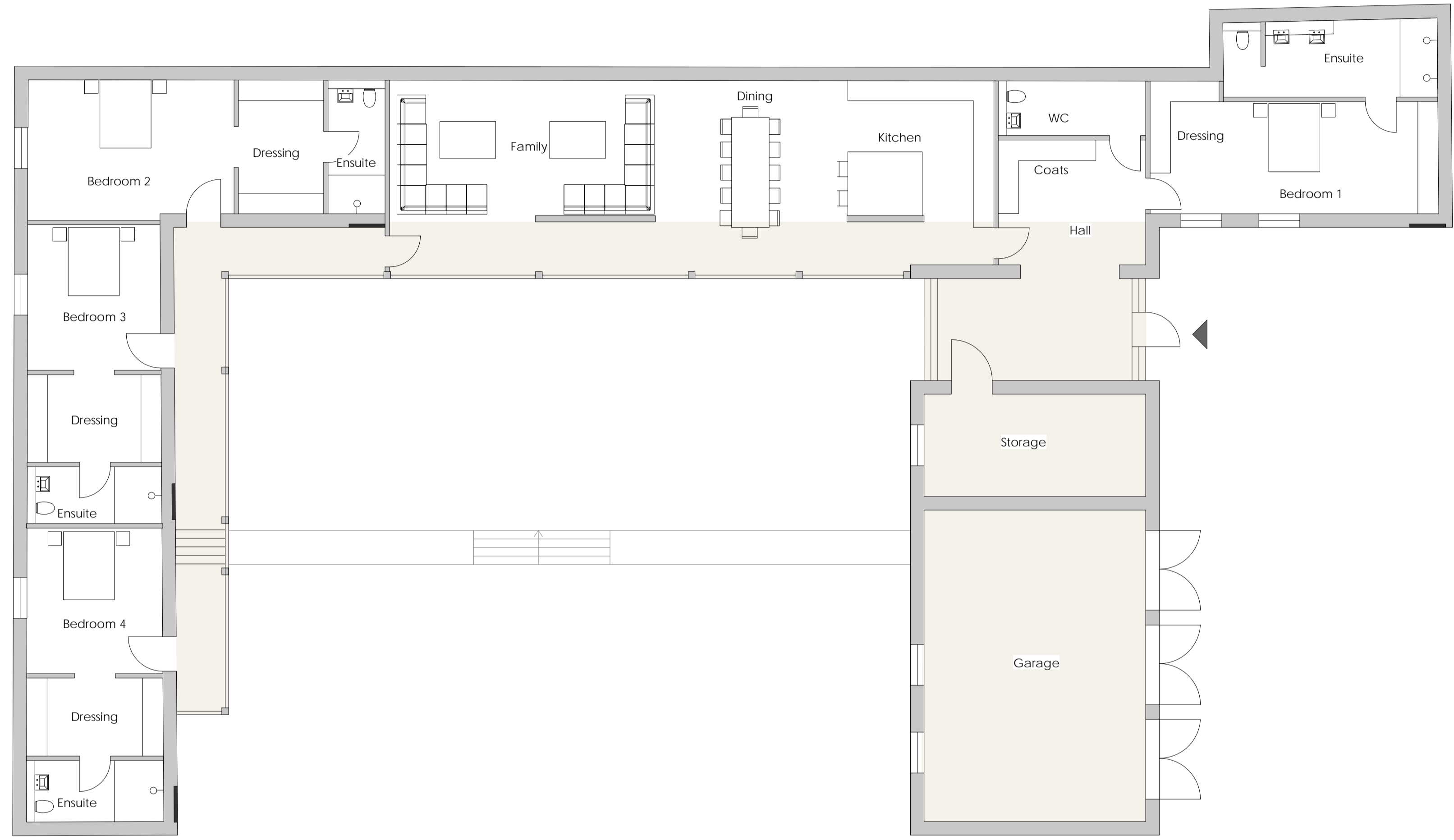


SOUTH ELEVATION

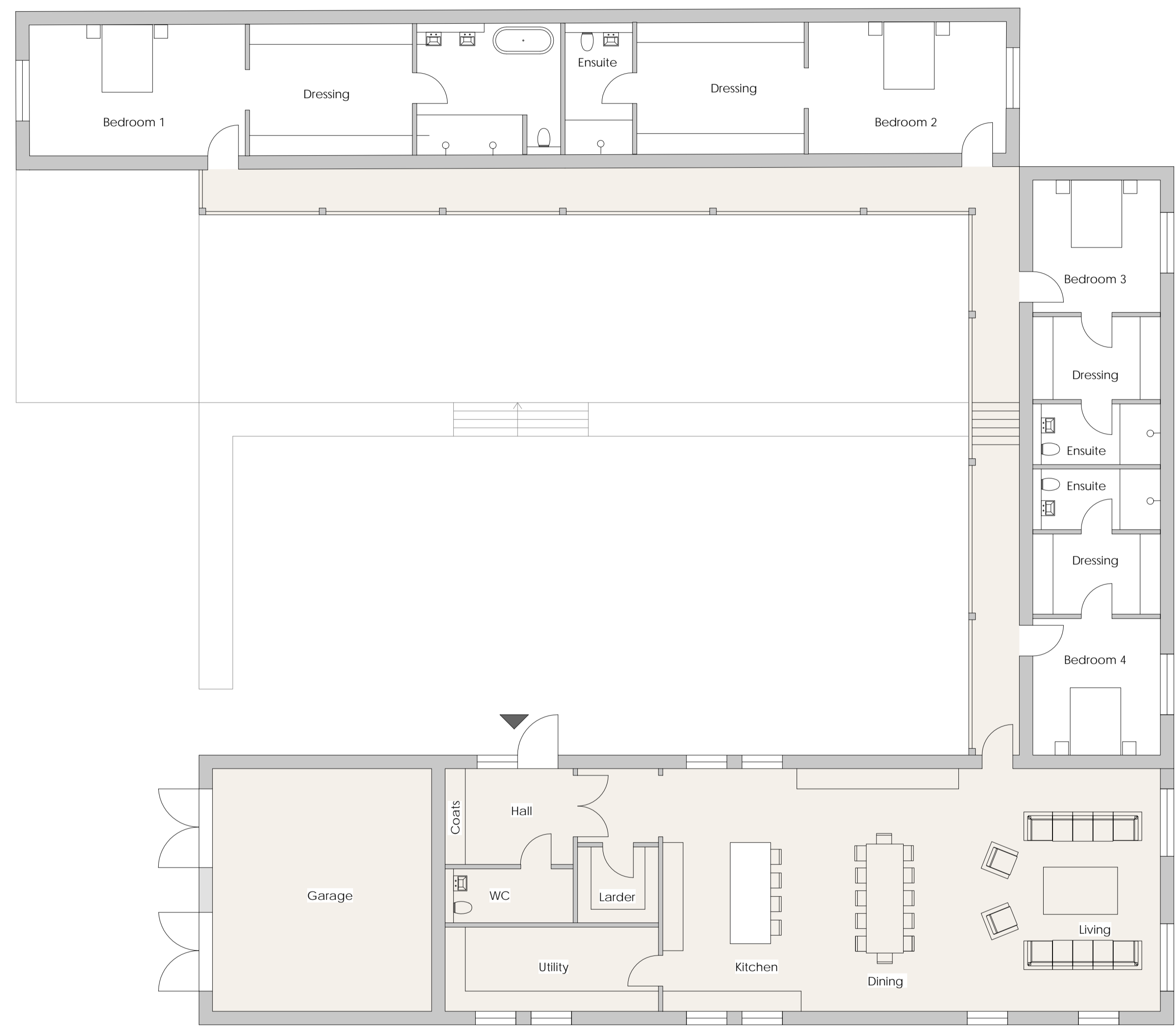
B 24/03/22 General Updates
 A 06/10/21 General Updates
 revision date description
 status
PRELIMINARY
 project title
 Antwick Stud, Letcombe Regis
 drawing title
 UNIT 3 - PROPOSED ELEVATIONS
 first issued drawn scale # of A1
 21/05/21 MAC 1:100
 job/drawing no/revision
21016 - PE0012 - B
 The Studio, 70 Church Road, Wheatley, Oxford, OX33 1LZ
 01865 873956 | info@andersonorr.com | www.andersonorr.com



PROPOSED PLAN - UNIT 1

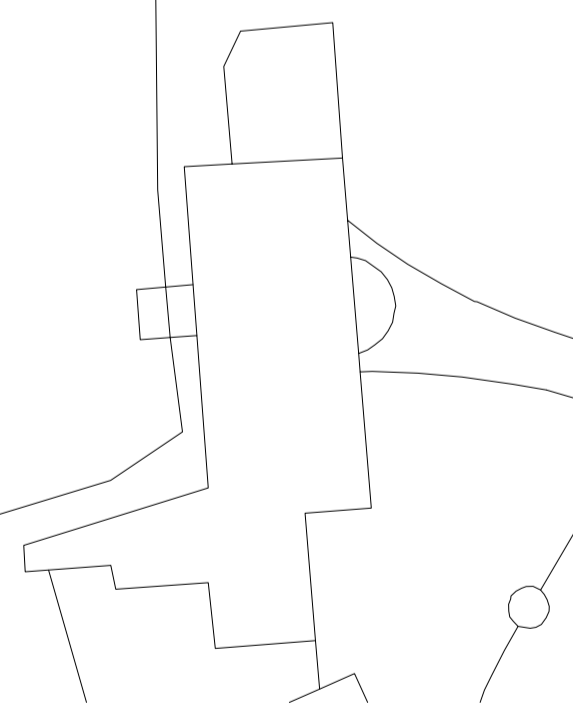
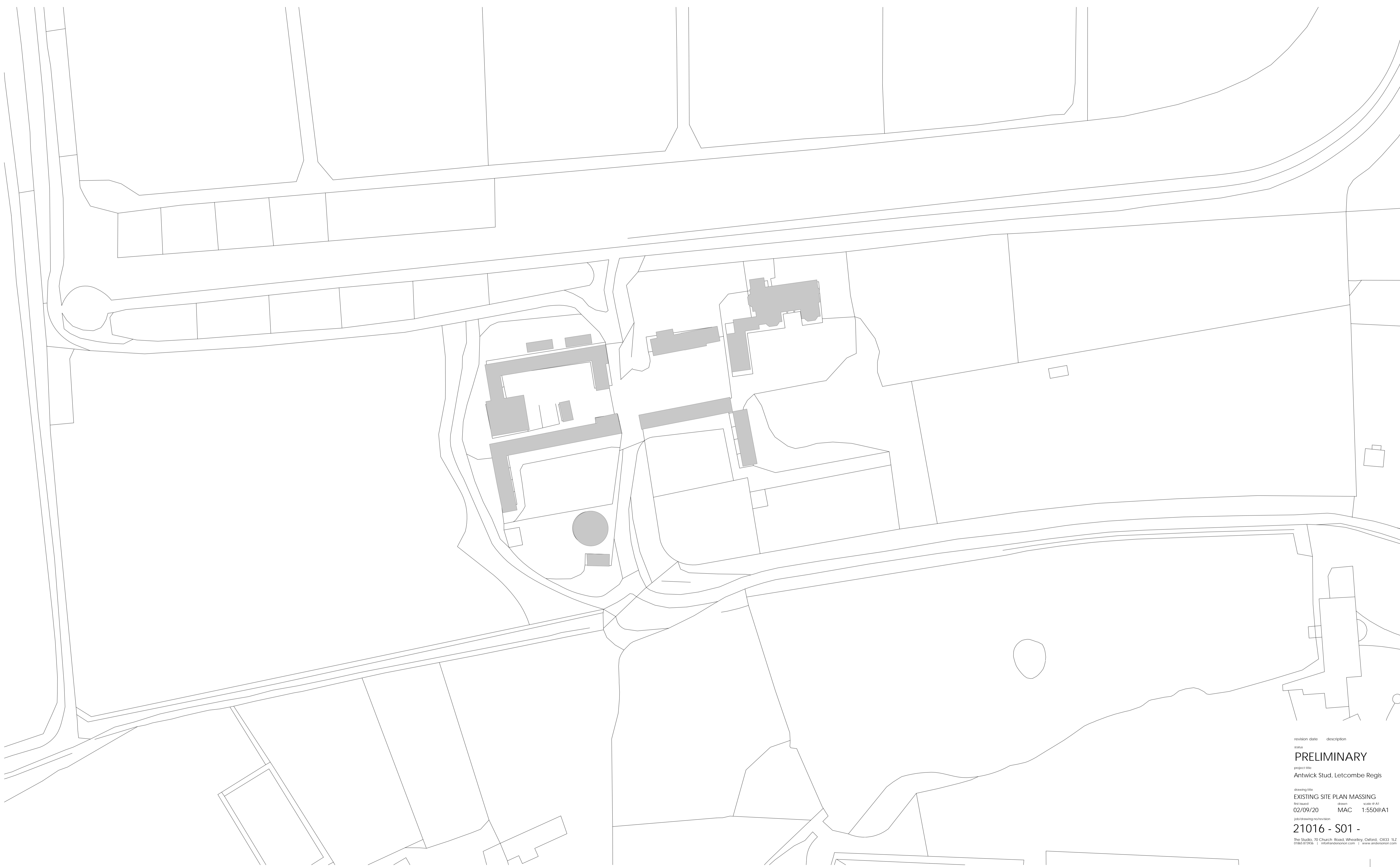


PROPOSED PLAN - UNIT 2



PROPOSED PLAN - UNIT 3

A 06/10/21 General Update
 revision date description
 status
PRELIMINARY
 project title
 Antwick Stud, Letcombe Regis
 drawing title
UNIT 3 - PROPOSED PLAN
 first issued drawn scale @ A1
 21/05/21 MAC 1:100
 job/drawing no/revision
21016 - PP0032 - A
 The Studio, 70 Church Road, Wheatley, Oxford, OX33 1LZ
 01865 873956 | info@andersonorr.com | www.andersonorr.com



revision	date	description

status
PRELIMINARY

project title
Antwick Stud, Letcombe Regis

drawing title
EXISTING SITE PLAN MASSING

first issued	drawn	scale	# of A1
02/09/20	MAC	1:550	A1

job/drawing no/revision
21016 - S01 -

The Studio, 70 Church Road, Wheatley, Oxford, OX33 1LZ
01865 873956 | info@andersonorr.com | www.andersonorr.com



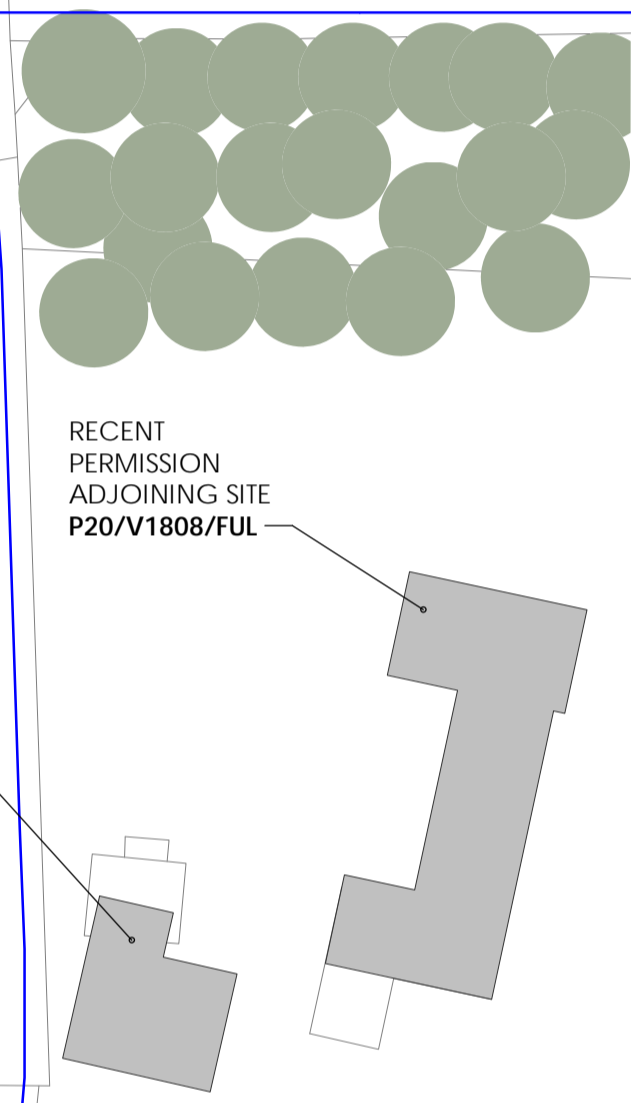
NOTE:
ALL DIMENSIONS MUST BE CHECKED ON SITE AND NOT SCALED FROM THIS DRAWING.
FOR USE IN PRE-CISE NAMED LOCATION ONLY. COPYRIGHT RESERVED.



Red hatch indicates existing structures to be removed

No works are to undertaken within the R.P.A.
R.P.A.
TPO Tree
Existing hardstanding
Nesting Swallow Barn

LIVE APPLICATION
P21/V2826/HH



RECENT PERMISSION
ADJOINING SITE
P20/V1808/FUL

revision	date	description
F	13-04-22	General Updates
E	8-4-22	General Updates
D	14-12-21	General Updates
C	06-10-21	General Updates
B	27-05-21	General Updates
A	15-03-21	General Updates

status
PRELIMINARY
project title
Antwick Stud, Letcombe Regis

drawing title
PROPOSED SITE PLAN
file issued
15/03/21
drawn
MAC
scale @ A1
1:500 @ A1

job/drawing reference
21016 - PP0010 - F
The Studio, 70 Church Road, Wheatley, Oxford, OX33 1LZ
01865 873956 | info@andersonorr.com | www.andersonorr.com

Anderson Orr
Architects

PWB

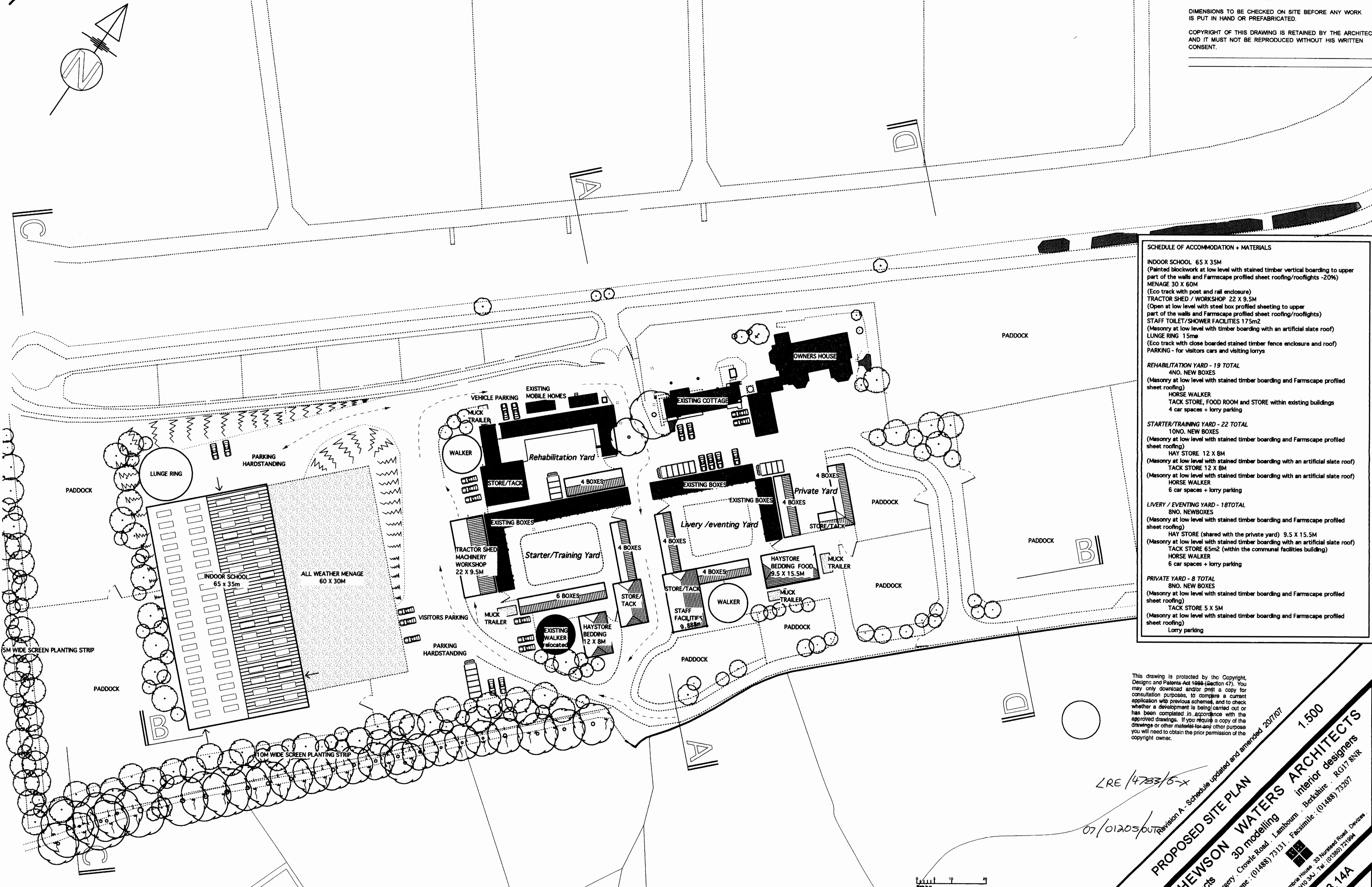
FOR SECTIONS SEE DRAWING 2503.15

Appendix 2

ALL FIGURED DIMENSIONS ARE TO BE TAKEN IN PREFERENCE TO SCALED DIMENSIONS AND ANY INACCURACIES ARE TO BE REPORTED TO THE ARCHITECT.

DIMENSIONS TO BE CHECKED ON SITE BEFORE ANY WORK IS PUT IN HAND OR PREFABRICATED.

COPYRIGHT OF THIS DRAWING IS RETAINED BY THE ARCHITECT AND IT MUST NOT BE REPRODUCED WITHOUT HIS WRITTEN CONSENT.



SCHEDULE OF ACCOMMODATION + MATERIALS

INDOOR SCHOOL - 65 X 35M
 (Painted blockwork at low level with stained timber vertical boarding to upper part of the walls and Farnscape profiled sheet roofing/rooflights -20%)
MENAGE 30 X 60M
 (Eco track with post and rail enclosure)
TRACTOR SHED / WORKSHOP 22 X 9.5M
 (Open at low level with steel box profiled sheeting to upper part of the walls and Farnscape profiled sheet roofing/rooflights)
STAFF TOILET / SHOWER FACILITIES 175m²
 (Masonry at low level with timber boarding with an artificial slate roof)
LUNGE RING 15m²
 (Eco track with close boarded stained timber fence enclosure and roof)
PARKING - for visitors cars and visiting lorries

REHABILITATION YARD - 19 TOTAL
4NO. NEW BOXES
 (Masonry at low level with stained timber boarding and Farnscape profiled sheet roofing)
HORSE WALKER
TACK STORE, FOOD ROOM and STORE within existing buildings
 4 car spaces + lorry parking

STARTER/TRAINING YARD - 22 TOTAL
10NO. NEW BOXES
 (Masonry at low level with stained timber boarding and Farnscape profiled sheet roofing)
HAY STORE 12 X 8M
 (Masonry at low level with stained timber boarding with an artificial slate roof)
TACK STORE 12 X 8M
 (Masonry at low level with stained timber boarding with an artificial slate roof)
HORSE WALKER
 6 car spaces + lorry parking

LIVERY / EVENTING YARD - 18 TOTAL
8NO. NEWBOXES
 (Masonry at low level with stained timber boarding and Farnscape profiled sheet roofing)
HAY STORE (shared with the private yard) 9.5 X 15.5M
 (Masonry at low level with stained timber boarding with an artificial slate roof)
TACK STORE 65m² (within the communal facilities building)
HORSE WALKER
 6 car spaces + lorry parking

PRIVATE YARD - 8 TOTAL
8NO. NEW BOXES
 (Masonry at low level with stained timber boarding and Farnscape profiled sheet roofing)
TACK STORE 5 X 5M
 (Masonry at low level with stained timber boarding and Farnscape profiled sheet roofing)
 Lorry parking

This drawing is protected by the Copyright, Design and Patents Act 1988 (Section 47). You may only download and/or print a copy for consultation purposes, to compare a current application with previous schemes, and to check whether a development is being carried out or has been completed in accordance with the approved drawings. If you require a copy of the drawings or other material for any other purpose you will need to obtain the prior permission of the copyright owner.

LRE / 4783 / 6-x

07/01203/OUT

Revision A - Schedule updated and amended 20/7/07

PROPOSED SITE PLAN

MATHEWSON WATERS ARCHITECTS
 architects
 interior designers

The Old Swanery · Croyle Road · Lambourn · Berkshire · RG17 8NR
 Telephone : (01488) 73131 · Facsimile : (01488) 73207

Studio also at: Capenhurst House · 23 Northwood Road · Devesey · Walsley · BH10 3AJ · Tel : (01202) 722904

1.500

2503.14A

PROPOSED WORKS TO ANTWICK STUD

JULY 2007

AI