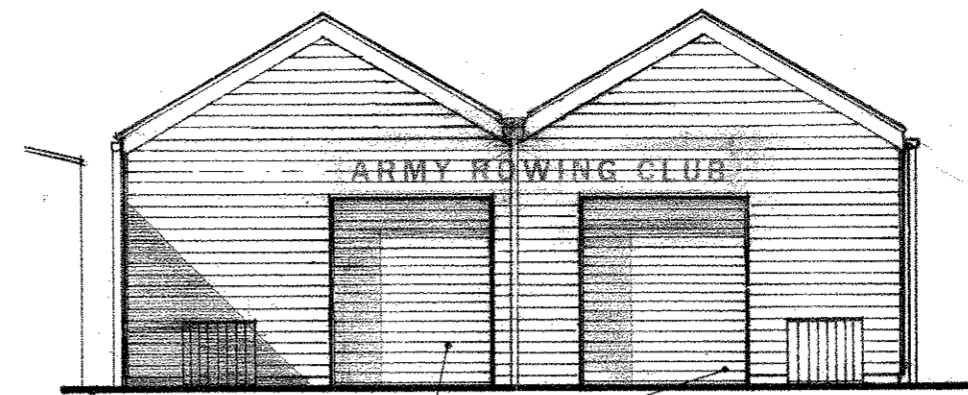


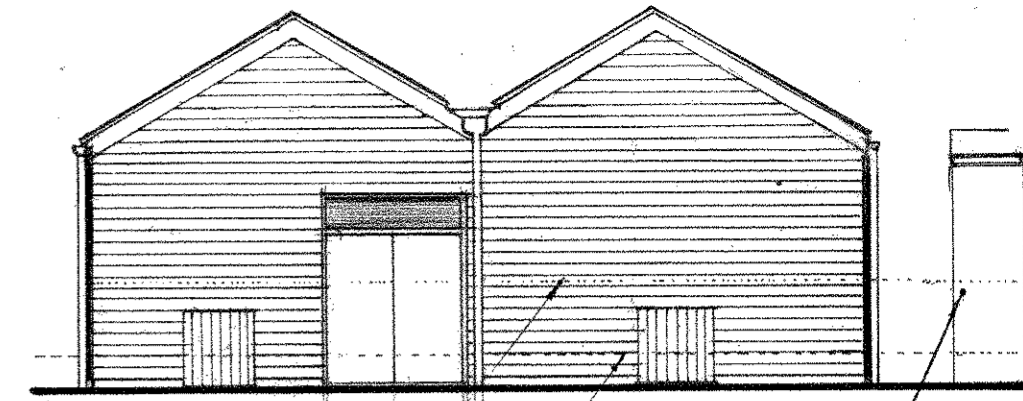
south elevation

two flow voids.
1000 x 1070mm with security
grid to have 100mm space
between bars.



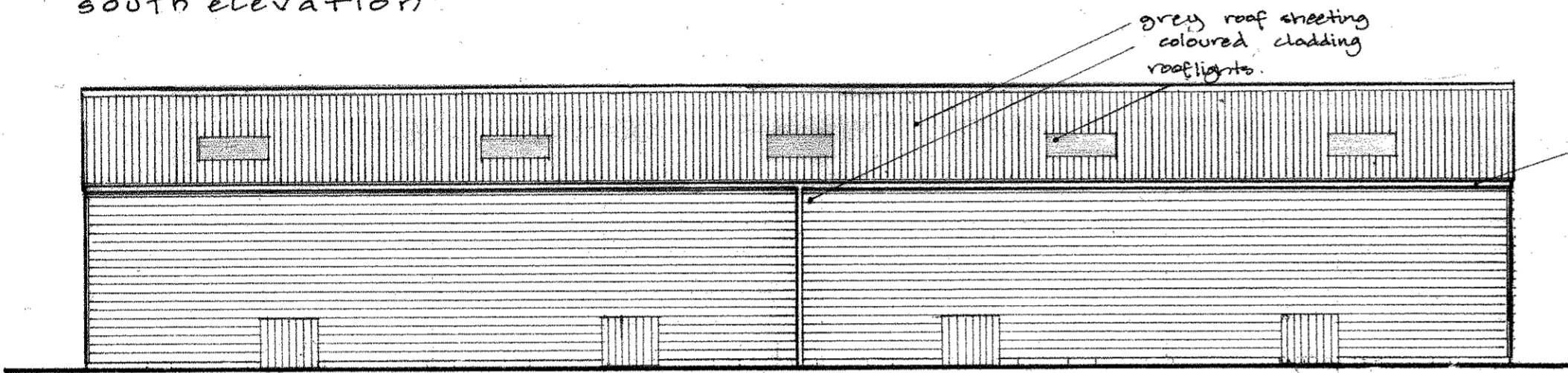
east elevation
(river thames)

dark grey doors



west elevation
(wilsham road)

line of extg hedge on boundary
line of top of extg wtb to wilsham Rd.
extg. boat store for
Abingdon Rowing Club.



north elevation

grey roof sheeting
coloured cladding
rooflights.

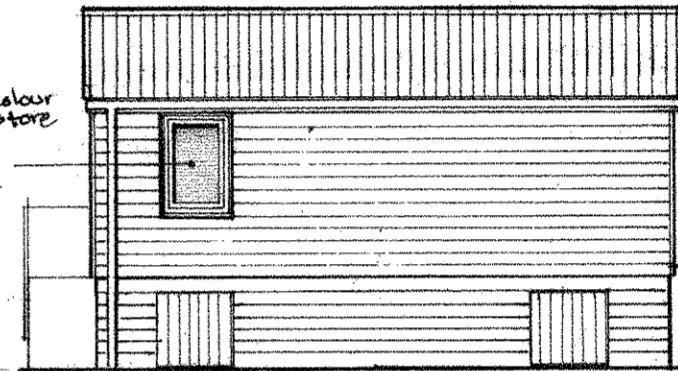
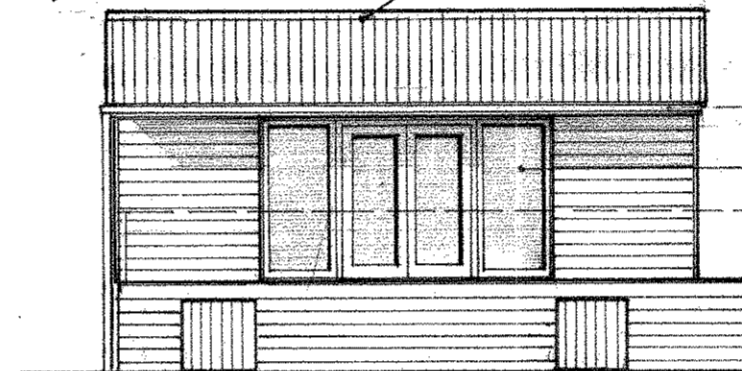
black d/p's & gutter

grey britmet tiles or similar

cladding - colour
to match store
dark grey windows &
doors.

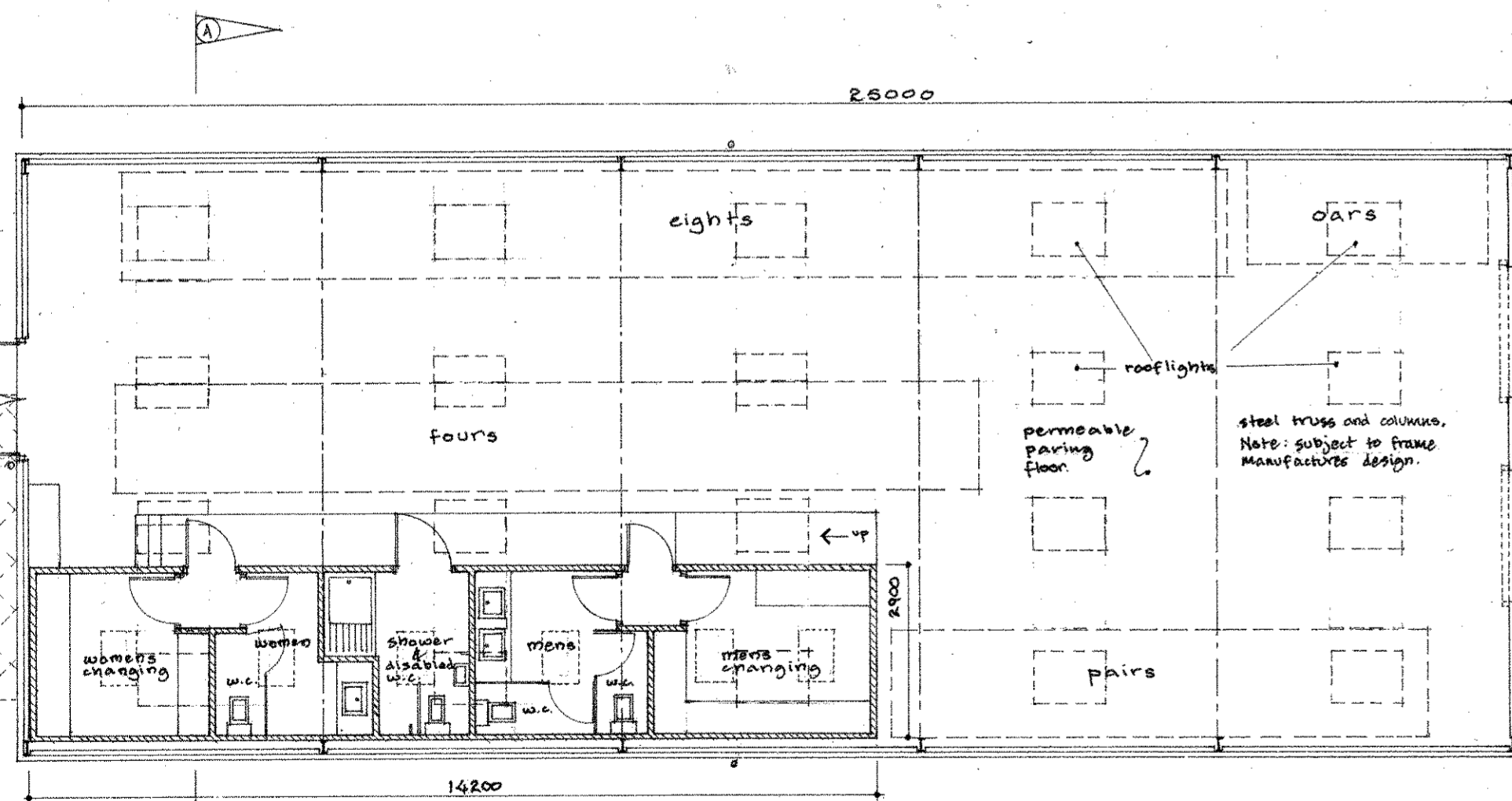
two flow voids.

east elevation

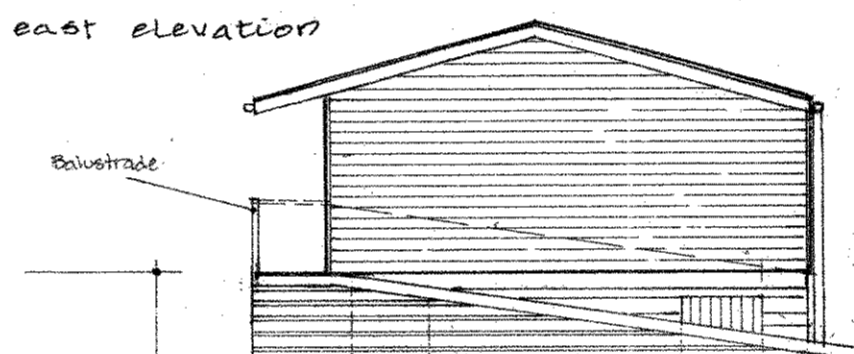


floor level

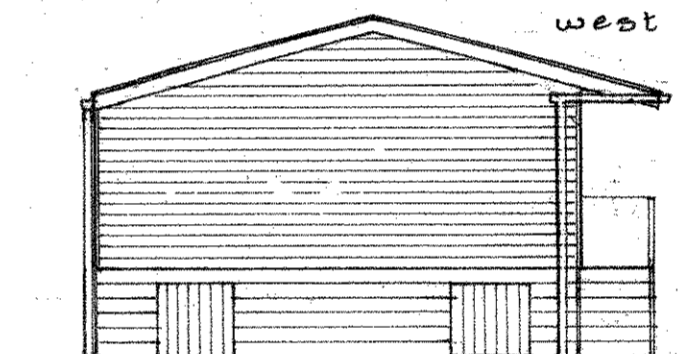
west elevation



rowing boat store

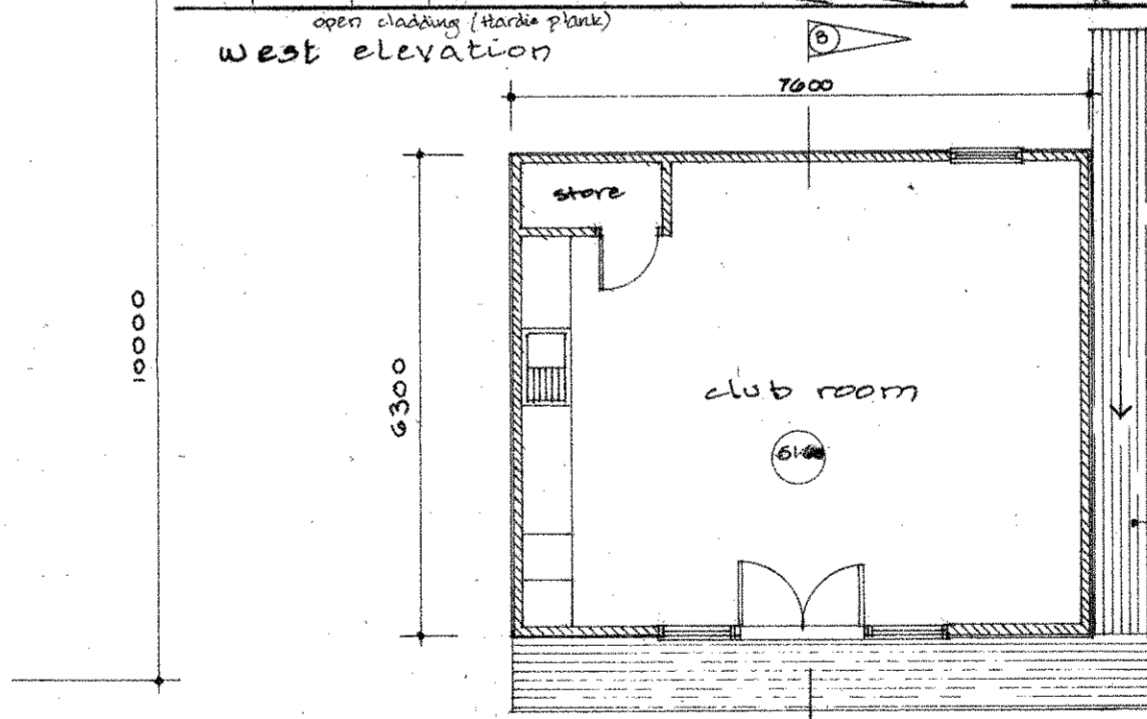


west elevation

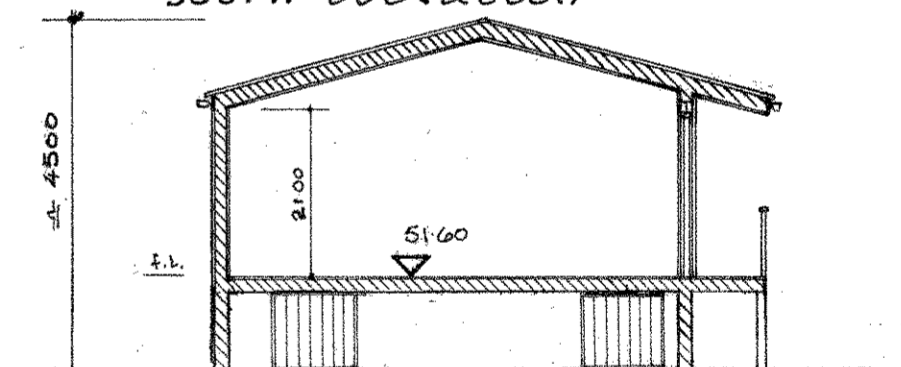


floor level: 51.60
d/gt 50.30
E.A 1:100 year
flood + CC level
51.57

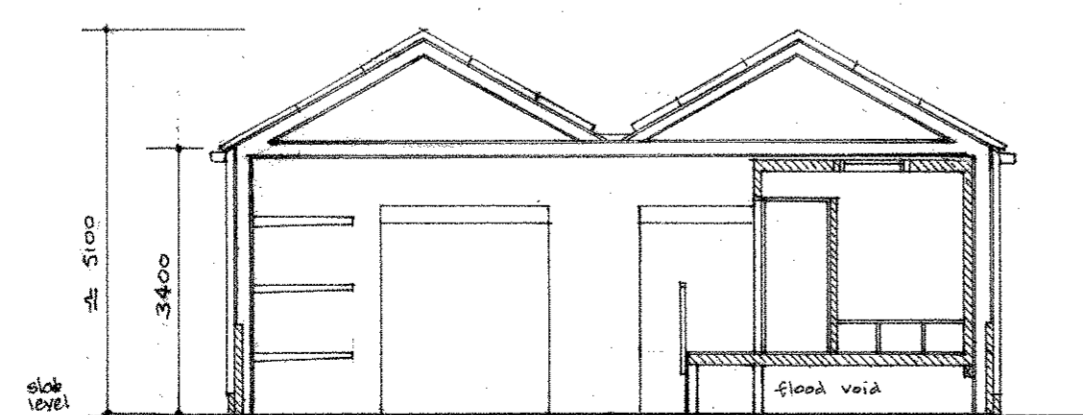
south elevation



club room



section B-B.



section A-A

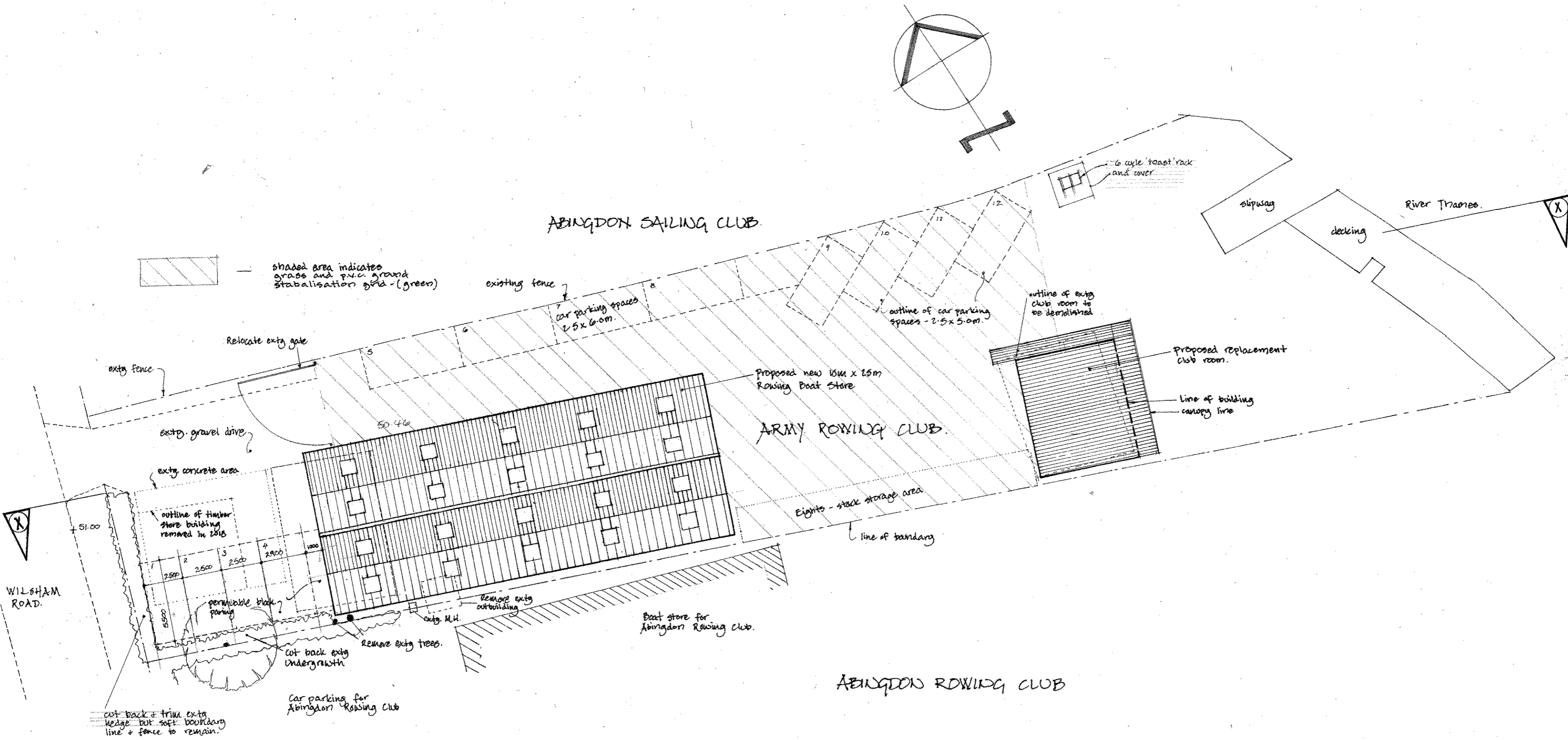
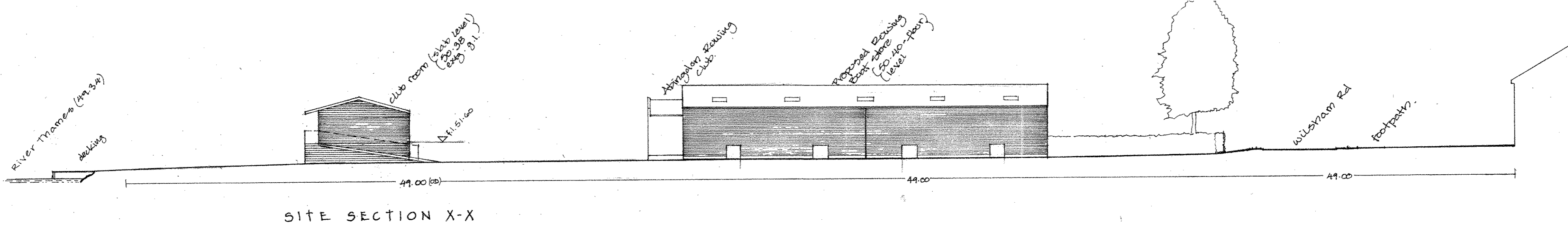
Revisions -
c. cladding altered - pitch
roof to clubroom 5/19
D: sections + dimensions
added - 6/19.
E: planning alterations -
Boat store roof & E.A.
changes - F.L. raised, holes
increased in size

proposed rowing boat store and club room for the
Army Rowing Boat Club at
Wilsham Road, Abingdon OX14 5LD

scale: 1:100

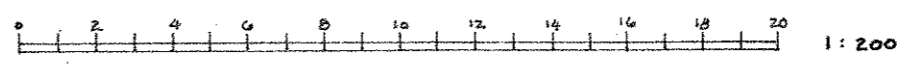
date: Nov 2018

dwg no ARC/ABQ/05/E



SITE LAYOUT

REVISIONS
 A June 19 - site section X-X added.



REV B 9/19 - Revised roof plan to Boat store - amended P.I. to club room following E.A. comments. cycle store added, amended car park notation

proposed rowing boat store and club room for the Army Rowing Boat Club at Wilsham Road, Abingdon. OX14 5LD.

Scale: 1:200 date: Nov. 2018 dwg. no. ARC/ABQ/04/B