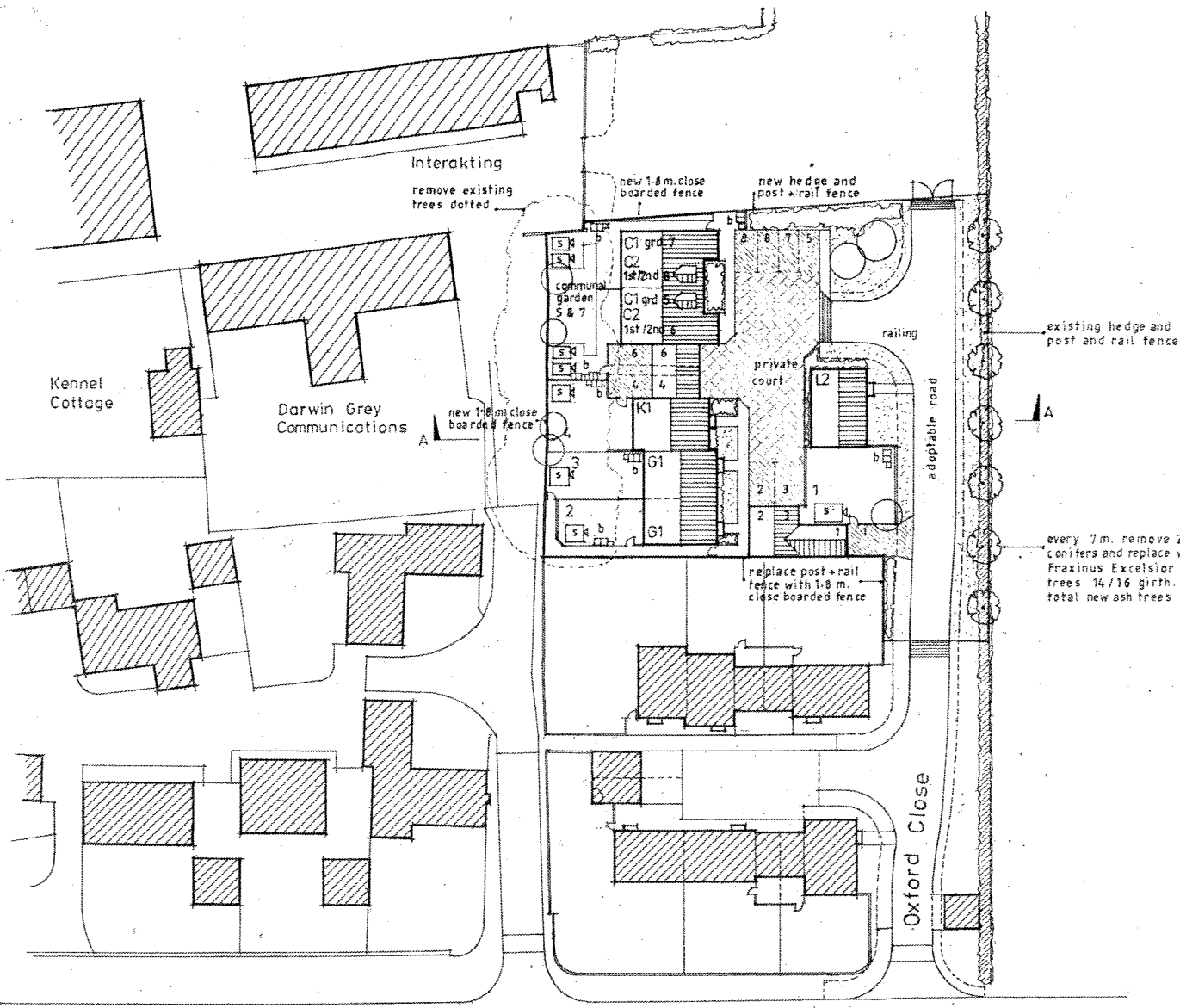


 **sovereign**  
 Development & Asset Management Department  
 Woodlands, 90 Bartholomew Street  
 Newbury RG14 5EE  
 Phone: 01635 572220 Fax: 01635 572123  
 web: [www.sovereign.org.uk](http://www.sovereign.org.uk)  
 email: [enquiries@sovereign.org.uk](mailto:enquiries@sovereign.org.uk)  
 Sovereign Housing Group Limited is Charitable

Drawing	Scale
<b>Location Plan</b>	<b>1 : 1250</b>
	Date
	<b>15 : 12 : 10</b>
Project	Drawn <b>AT Drake</b>
<b>Oxford Close Kingston Bagpuize</b>	Project No.
	<b>1308 - 1</b>

APPENDIX 1



**Accommodation**

- 1 No 4 Bed 6 Person Houses - (101m<sup>2</sup> type L2 Plot 1)
- 1 No 3 Bed 5 Person House - (90m<sup>2</sup> type K1 Plot 4)
- 2 No 2 Bed 4 Person Houses - (79m<sup>2</sup> type G1 Plots 2 - 3)
- 2 No 1 Bed 2 Person Flats - (52m<sup>2</sup> type C1 Grd Fir Plots 5, 7)
- 2 No 2 Bed 3 Person Flats - (89m<sup>2</sup> type C2 First Fir Plots 6, 8)

**Total : 8 No Dwellings**



- proposed tree planting
- proposed shrub planting
- shed / cycle storage
- refuse/recycling bin positions

Shared Ownership units to plots 6 and 8 - first floor flats

existing hedge and post and rail fence

every 7m. remove 2 no. exg. conifers and replace with 1 no. Fraxinus Excelsior (common ash) trees 14/16 girth. total new ash trees 7 no.

**AMENDED PLAN**

REV. A. 14.03.11 Bigs. & road adjusted to accommodate tree belt

Oxford Road

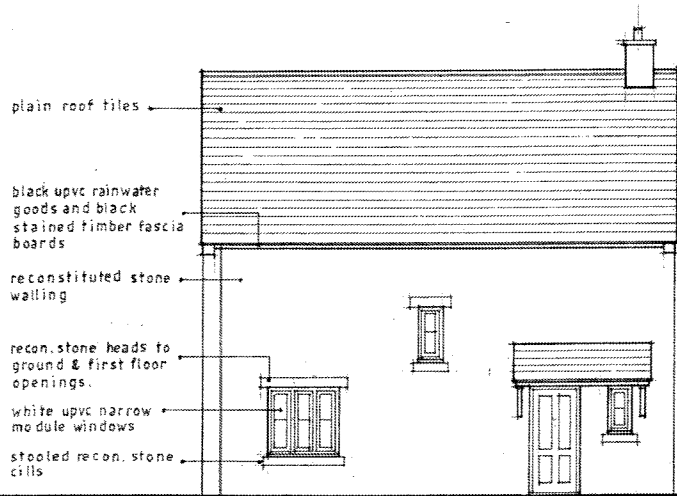
Oxford Close

Appleby House

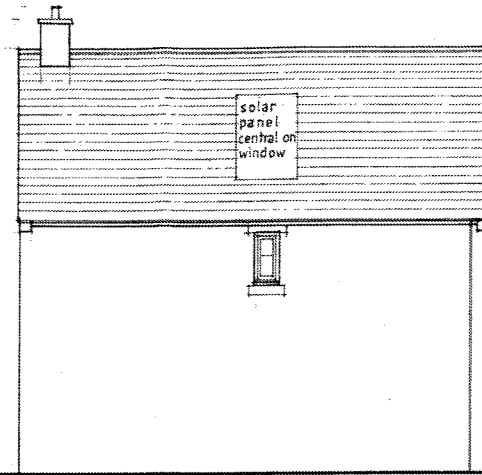


**sovereign**  
 Development & Asset Management Department  
 Woodlands, 50 Bartholomew Street  
 Newbury RG14 5EE  
 Phone: 01635 572220 Fax: 01635 572123  
 web: [www.sovereign.org.uk](http://www.sovereign.org.uk)  
 email: [enquiries@sovereign.org.uk](mailto:enquiries@sovereign.org.uk)  
 Sovereign Housing Group Limited is Charitable

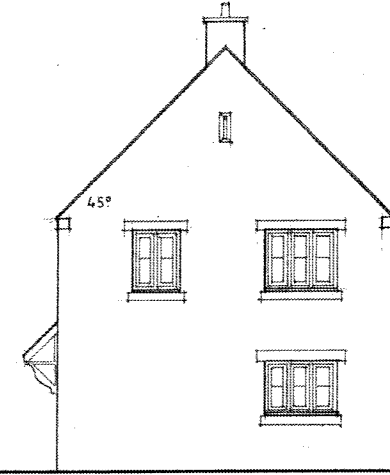
Drawing	Site Plan	Scale	1 : 500
Date	15 : 12 : 10	Drawn	A T Drake
Project	Oxford Close Kingston Bagpuize	Project No.	1308 - 2 A



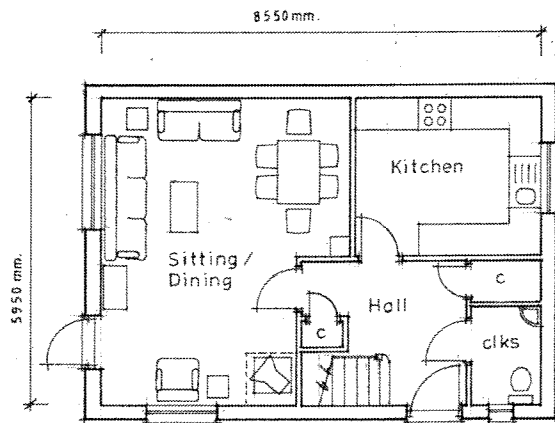
East Elevation



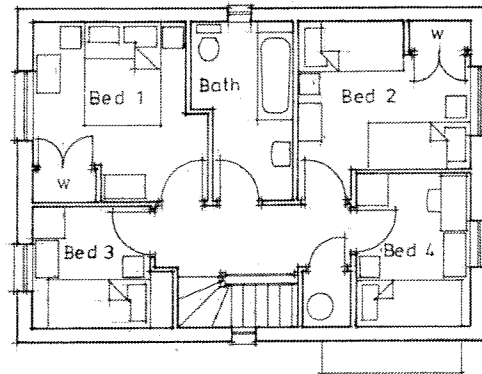
West Elevation



North Elevation



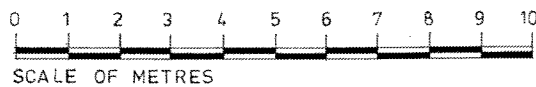
Plot 1 - L2 Type  
Ground Floor Plan

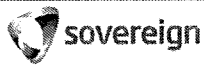


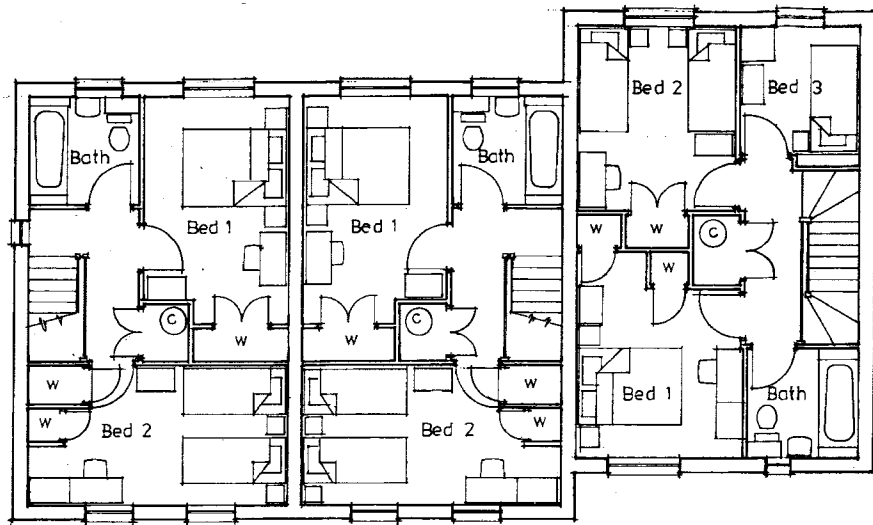
First Floor Plan



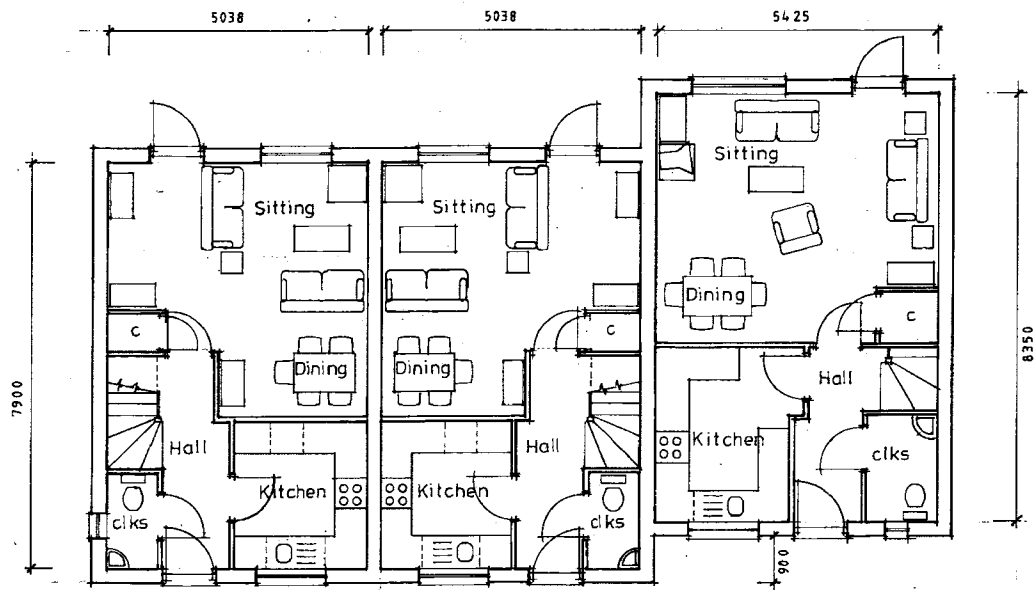
South Elevation



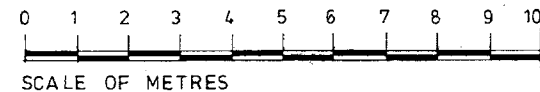
 Development & Asset Management Department Woodlands, 90 Bartholomew Street Newbury RG14 6EE Phone: 01635 672220 Fax: 01635 672123 web: <a href="http://www.sovereign.org.uk">www.sovereign.org.uk</a> email: <a href="mailto:enquiries@sovereign.org.uk">enquiries@sovereign.org.uk</a> <small>Sovereign Housing Group Limited is Charitable</small>	Drawing <b>Floor Plans &amp; Elevations Plot 1</b>	Scale <b>1 : 100</b>
	Project <b>Oxford Close Kingston Bagpuize</b>	Date <b>15 : 12 : 10</b>
	Project No. <b>1308 - 3</b>	




Plot 2 - G1 Type      Plot 3 - G1 Type      Plot 4 - K1 Type  
**First Floor Plan**



Plot 2 - G1 Type      Plot 3 - G1 Type      Plot 4 - K1 Type  
**Ground Floor Plan**



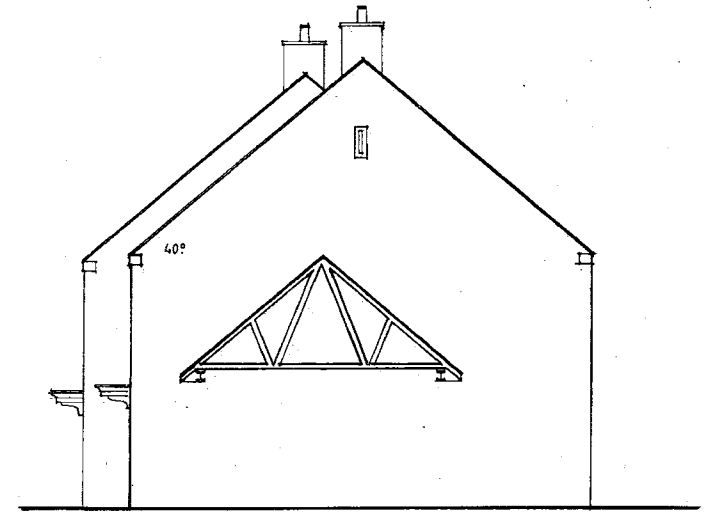
 <b>sovereign</b> Development & Asset Management Department Woodlands, 90 Bartholomew Street Newbury RG14 5EE Phone: 01635 572220 Fax: 01635 572123 web: www.sovereign.org.uk email: enquiries@sovereign.org.uk <small>Sovereign Housing Group Limited is Charitable</small>	Drawing <b>Floor Plans          Plots 2 - 4</b>	Scale <b>1 : 100</b>
	Project <b>Oxford Close          Kingston Bagpuize</b>	Date <b>15 : 12 : 10</b>
	Drawn <b>A T Drake</b>	Project No. <b>1308 - 4</b>



Plot 2 - G1 Type  
East Elevation

Plot 3 - G1 Type

Plot 4 - K1 Type



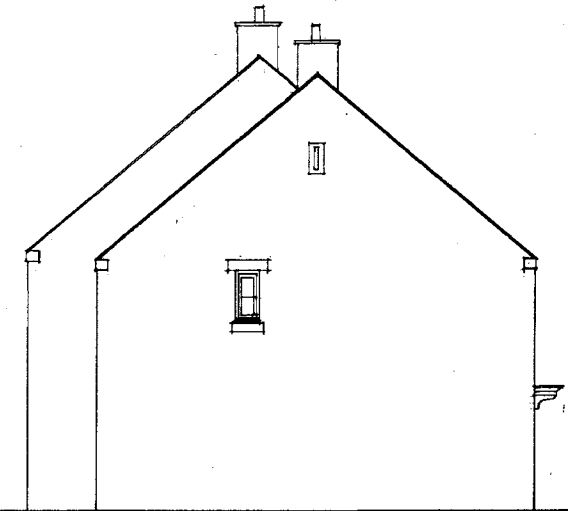
Plot 4 - K1 Type  
North Elevation



Plot 4 - K1 Type  
West Elevation

Plot 3 - G1 Type

Plot 2 - G1 Type

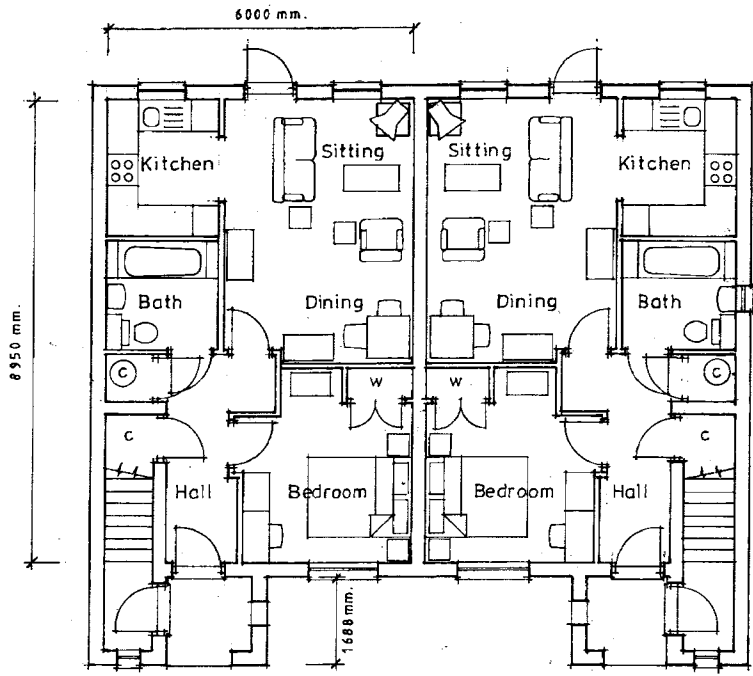


Plot 2 - G1 Type  
South Elevation



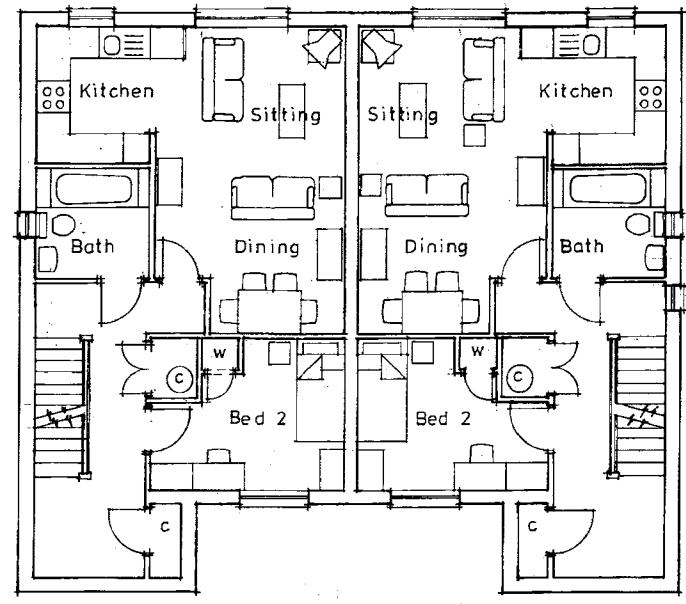
**sovereign**  
 Development & Asset Management Department  
 Woodlands, 90 Bartholomew Street  
 Newbury RG14 6EE  
 Phone: 01635 572220 Fax: 01635 572123  
 web: [www.sovereign.org.uk](http://www.sovereign.org.uk)  
 email: [gnoulines@sovereign.org.uk](mailto:gnoulines@sovereign.org.uk)  
 Sovereign Housing Group Limited is Charitable

Drawing	Scale
<b>Elevations Plots 2 - 4</b>	<b>1 : 100</b>
Project	Date
<b>Oxford Close Kingston Bagpuize</b>	<b>15 : 12 : 10</b>
	Drawn
	<b>A T Drake</b>
	Project No.
	<b>1308 - 5</b>



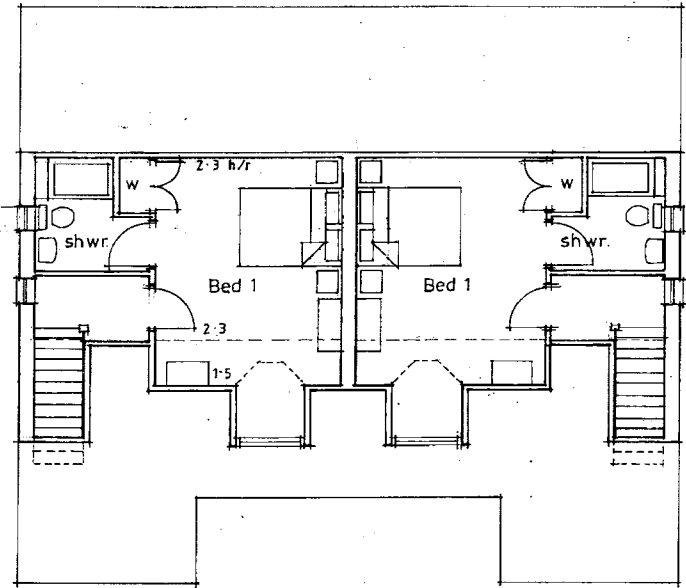
Plot 5 - C1 type  
Ground Floor Plan

Plot 7- C1 type



Plot 6 - C2  
First Floor Plan

Plot 8 - C2 type



Plot 6 - C2 type  
Second Floor Plan

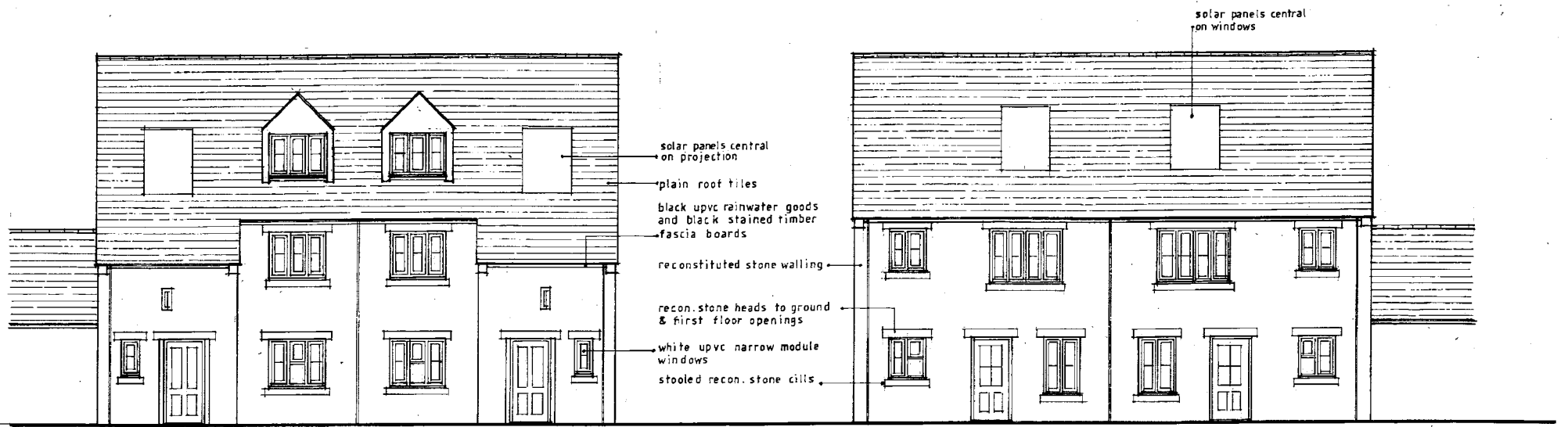
Plot 8 - C2 type



Development & Asset Management Department  
Woodlands, 90 Bartholomew Street  
Newbury RG14 5EE  
Phone: 01635 572220 Fax: 01635 572123  
web: [www.sovereign.org.uk](http://www.sovereign.org.uk)  
email: [enquiries@sovereign.org.uk](mailto:enquiries@sovereign.org.uk)

Sovereign Housing Group Limited is Charitable

Drawing	Scale
<b>Floor Plans</b> <b>Plots 5 - 8</b>	<b>1 : 100</b>
Project	Date
<b>Oxford Close</b> <b>Kingston Bagpuize</b>	<b>15 : 12 : 10</b>
Drawn	Project No.
<b>AT Drake</b>	<b>1308 - 6</b>

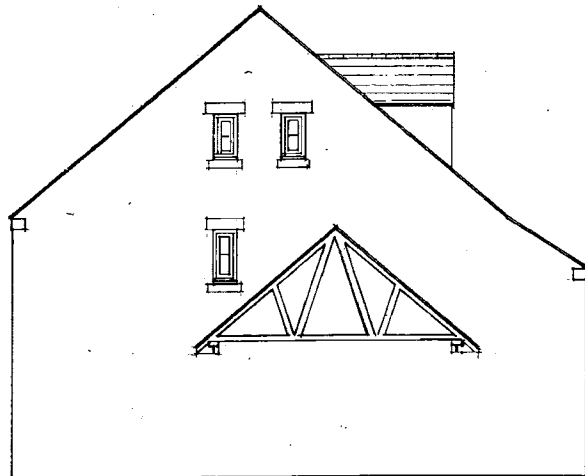


Plots 5/6 - C1/C2 Flats  
East Elevation

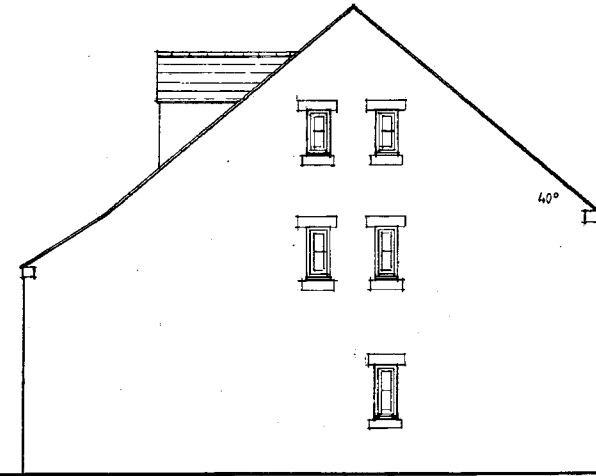
Plots 7/8

Plots 7/8 - C1/C2 Flats  
West Elevation

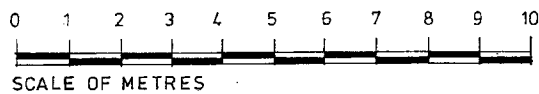
Plots 5/6




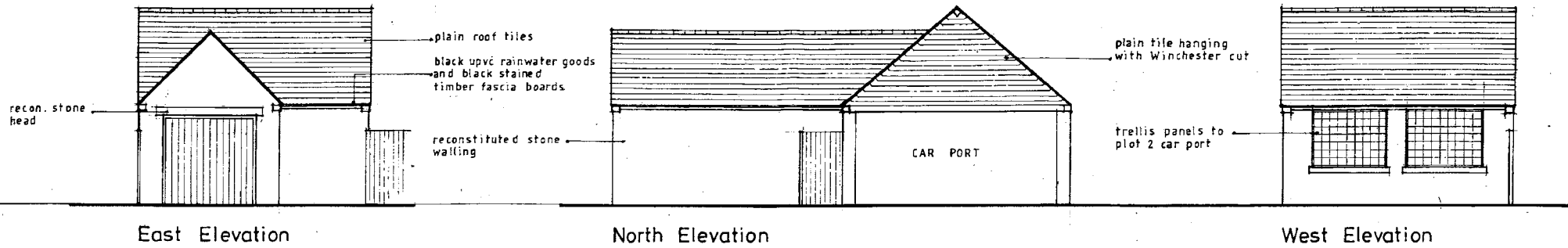
Plots 5/6  
South Elevation



Plots 7/8  
North Elevation



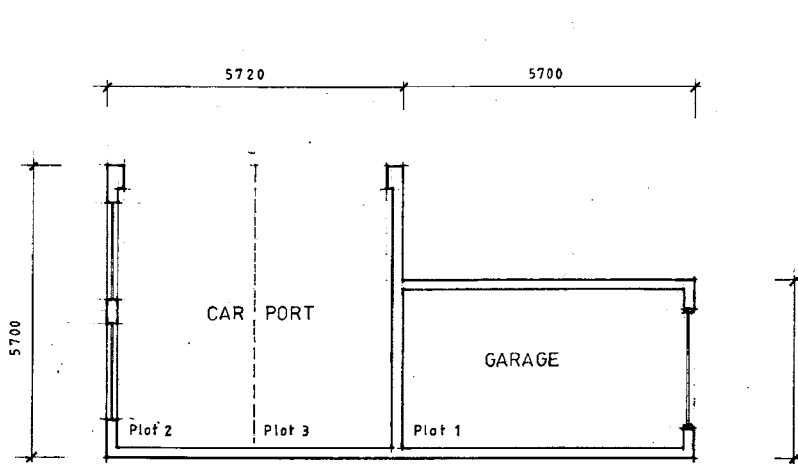
 <b>sovereign</b> Development & Asset Management Department Woodlands, 90 Bartholomew Street Newbury RG14 6EE Phone: 01635 672220 Fax: 01635 672123 web: <a href="http://www.sovereign.org.uk">www.sovereign.org.uk</a> email: <a href="mailto:enquiries@sovereign.org.uk">enquiries@sovereign.org.uk</a> <small>© Sovereign Housing Group Limited is Charitable</small>	Drawing	Scale
	<b>Elevations Plots 5 - 8</b>	<b>1 : 100</b>
	Date	
	<b>15 : 12 : 10</b>	
	Project	Drawn
	<b>Oxford Close Kingston Bagpuize</b>	<b>AT Drake</b>
	Project No.	
		<b>1308 - 7</b>



East Elevation

North Elevation

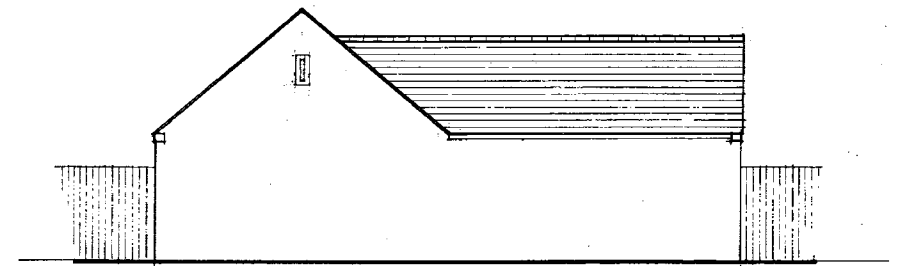
West Elevation




Plan



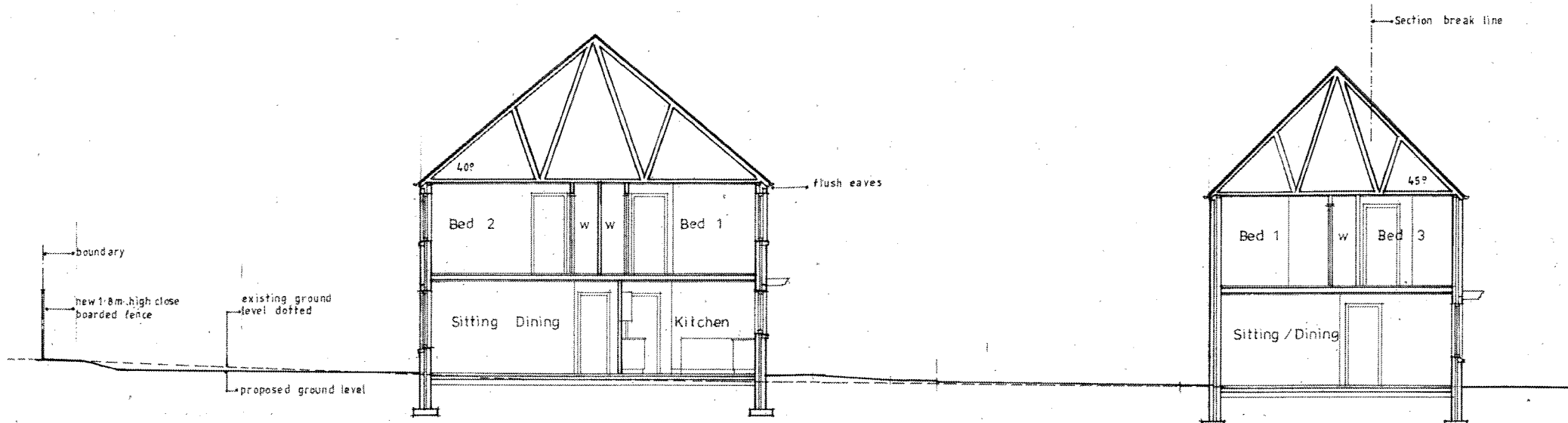
SCALE OF METRES



South Elevation

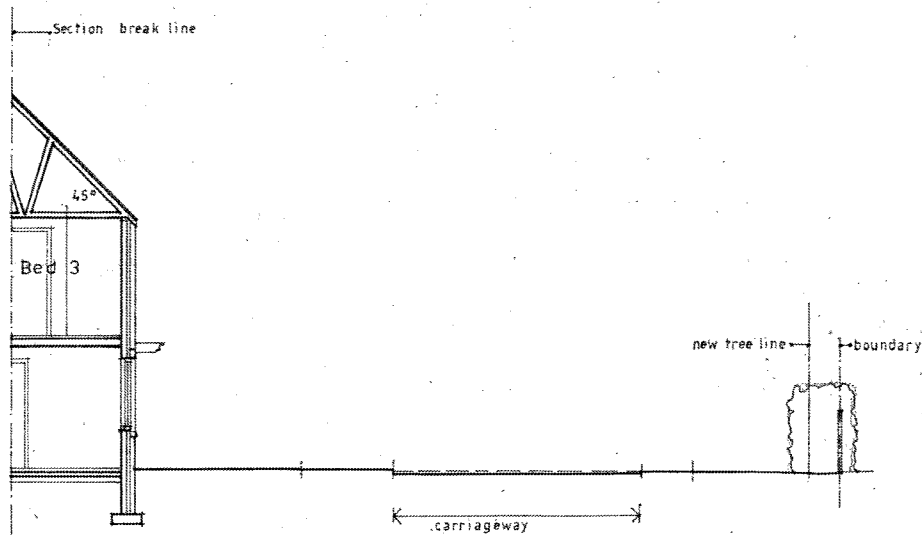
 <b>sovereign</b> Development & Asset Management Department Woodlands, 90 Bartholomew Street Newbury RG14 5EE Phone: 01635 572220 Fax: 01635 572123 web: <a href="http://www.sovereign.org.uk">www.sovereign.org.uk</a> email: <a href="mailto:enquiries@sovereign.org.uk">enquiries@sovereign.org.uk</a> <small>Sovereign Housing Group Limited is Charitable</small>	Drawing <b>Car Port / Garage          Plots 1, 2, 3</b>	Scale <b>1 : 100</b>
	Project <b>Oxford Close          Kingston Bagpuize</b>	Date <b>15 : 12 : 10</b>
	Drawn <b>A T Drake</b>	Project No. <b>1308 - 8</b>
	<small>Sovereign Housing Group Limited is Charitable</small>	





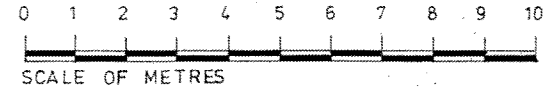
Plot 4 K1 Type House  
SITE SECTION A-A

Plot 1 L2 Type House




Plot 1 L2 Type House

AMENDED  
PLAN



REV. A. 15-03-11 Road & unit positions amended

 Development & Asset Management Department Woodlands, 90 Bartholomew Street Newbury RG14 6EE Phone: 01635 572220 Fax: 01635 572123 web: <a href="http://www.sovereign.org.uk">www.sovereign.org.uk</a> email: <a href="mailto:enquiries@sovereign.org.uk">enquiries@sovereign.org.uk</a> <small>Sovereign Housing Group Limited is Charitable</small>	Drawing	Scale
	<b>Site and K1 &amp; L2 Sections</b>	<b>1 : 100</b>
	Project	Date
	<b>Oxford Close Kingston Bagpuize</b>	<b>15 : 12 : 10</b>
	Drawn	Project No.
	<b>AT Drake</b>	<b>1308-9A</b>